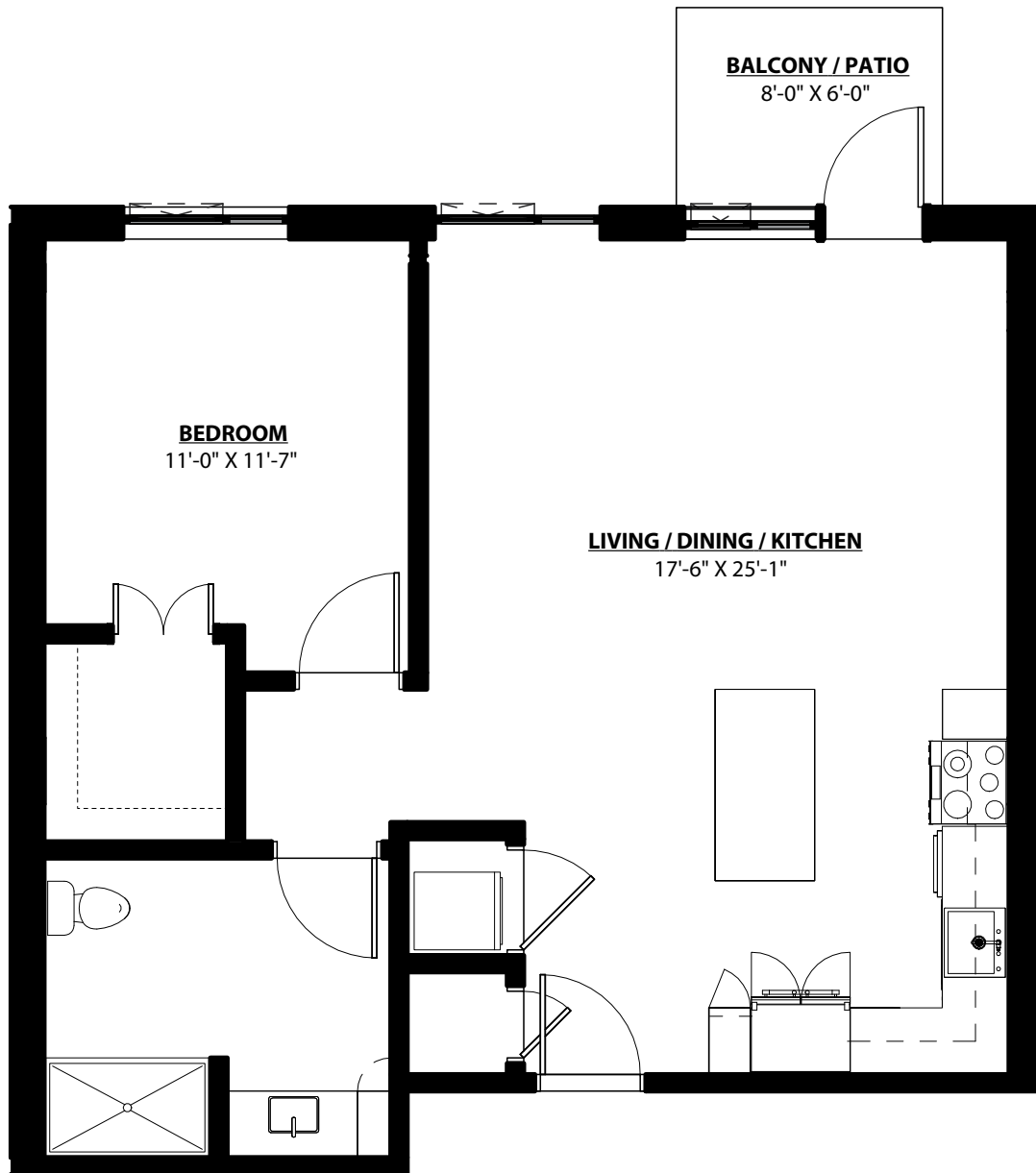


# Agave A

1 BEDROOM • 1 BATH • 803 SQ. FT.



All unit plans are representative and may not reflect the exact dimensions of all units within the building.

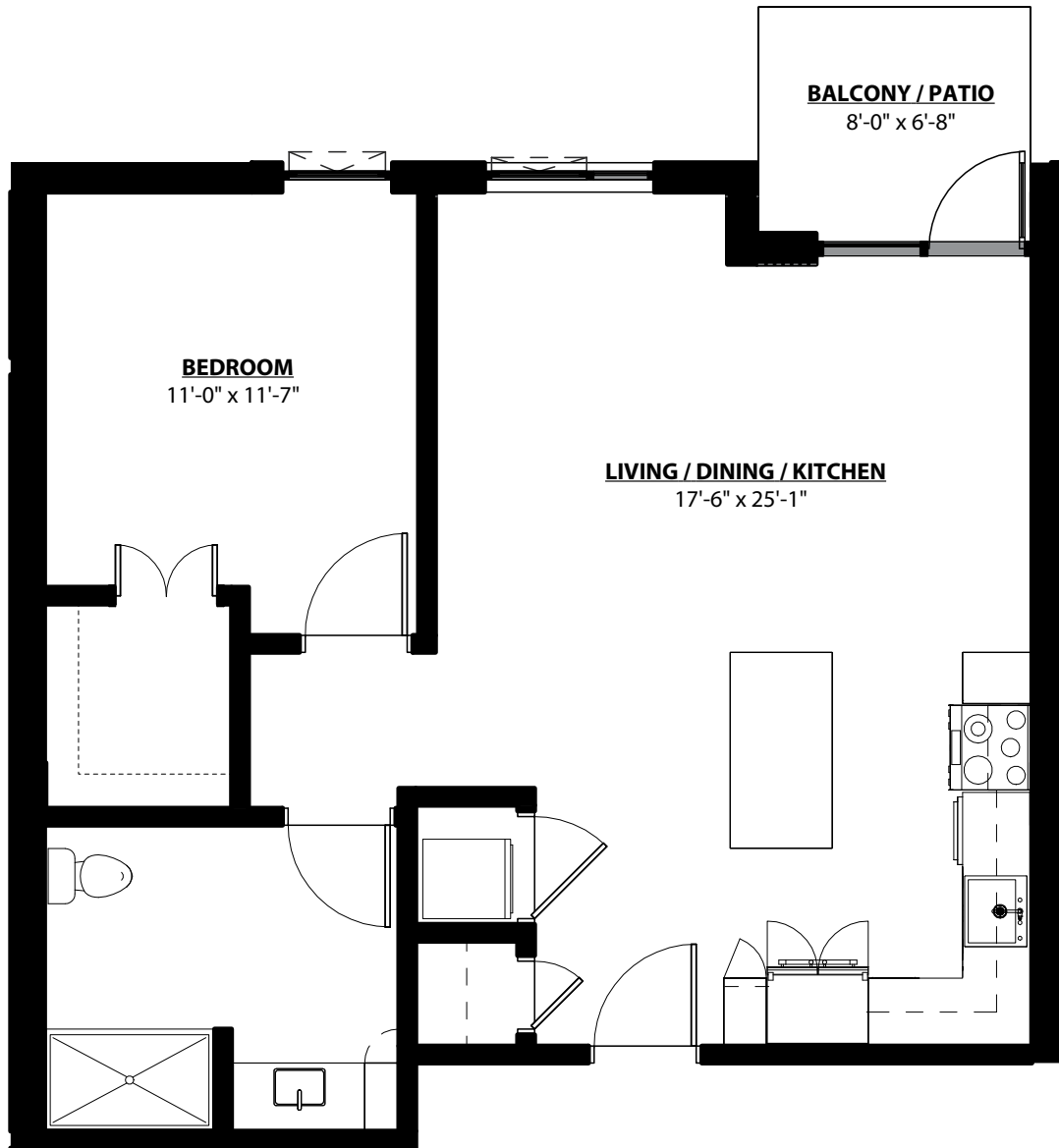


Per Health and Safety Code section 1772.2, Kendal at Ventura has filed an application for a Permit to Accept Deposits and a Certificate of Authority with the California Department of Social Services.

**Enso Verde**<sup>SM</sup>  
A KENDAL AFFILIATE

# Agave B

1 BEDROOM • 1 BATH • 784 SQ. FT.

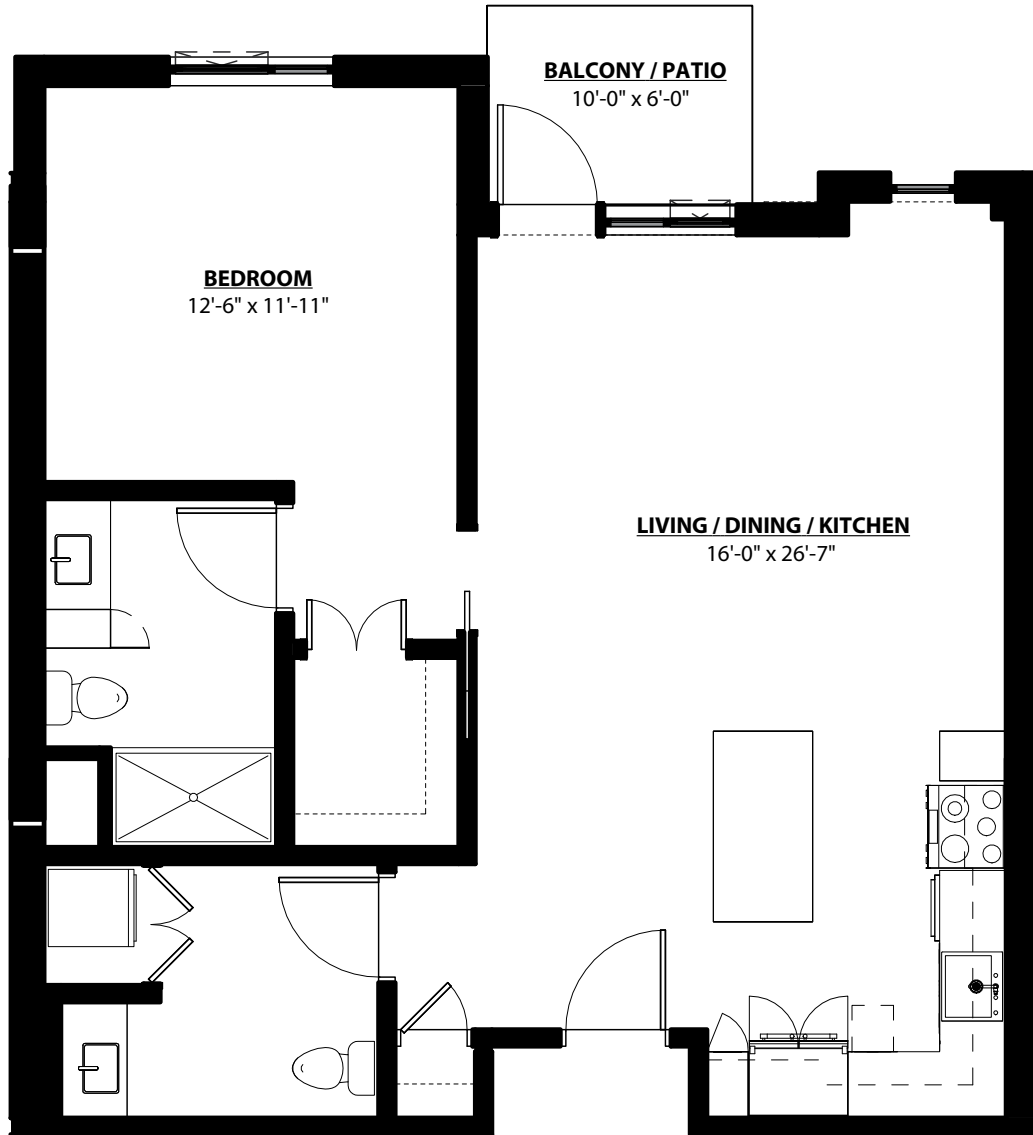


All unit plans are representative and may not reflect the exact dimensions of all units within the building.



Per Health and Safety Code section 1772.2, Kendal at Ventura has filed an application for a Permit to Accept Deposits and a Certificate of Authority with the California Department of Social Services.

**Enso Verde**<sup>SM</sup>  
A KENDAL AFFILIATE



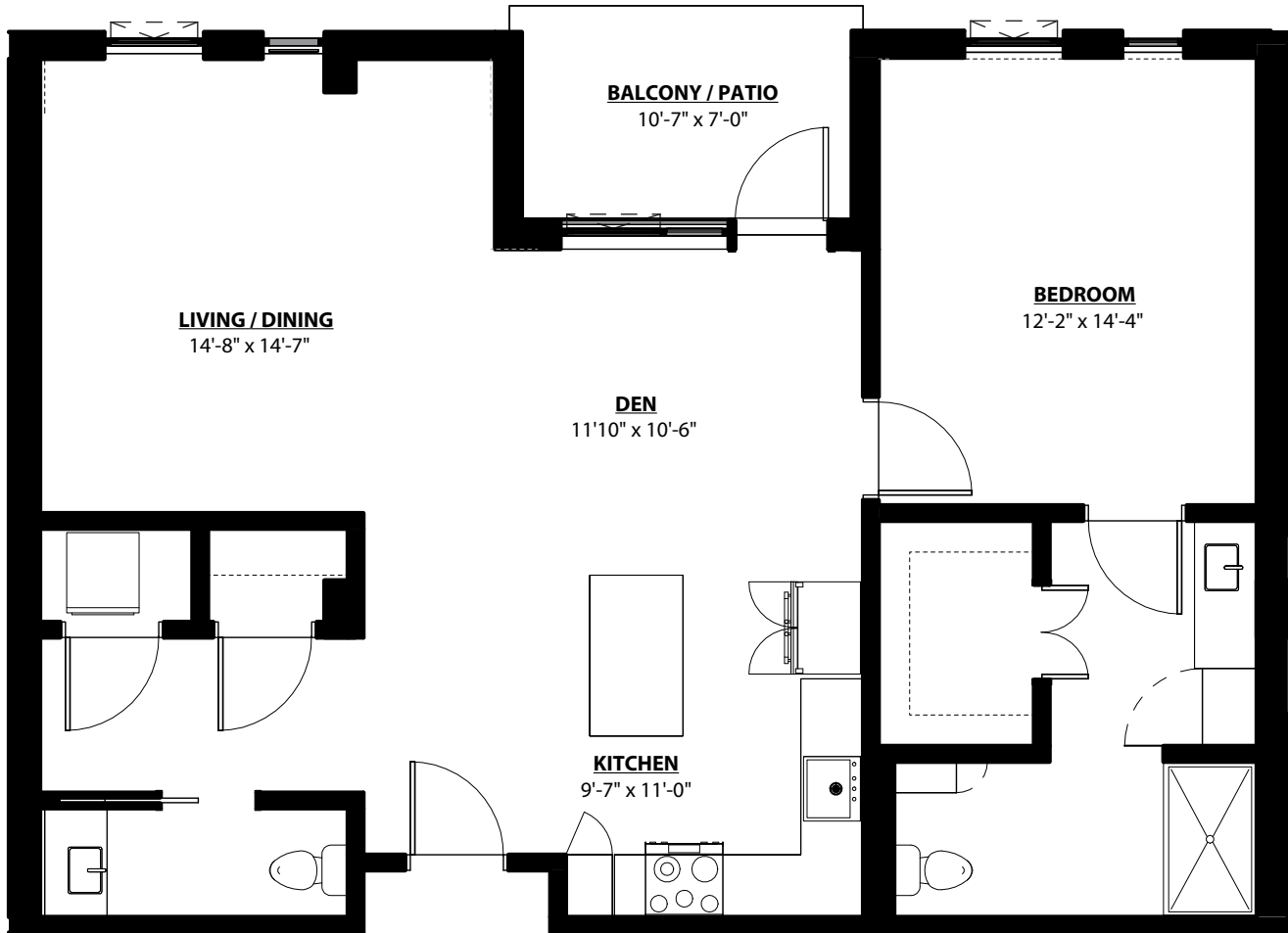
All unit plans are representative and may not reflect the exact dimensions of all units within the building.



Per Health and Safety Code section 1772.2, Kendal at Ventura has filed an application for a Permit to Accept Deposits and a Certificate of Authority with the California Department of Social Services.

# Daisy A

1 BEDROOM • 1.5 BATH • DEN • 1,047 SQ. FT.



All unit plans are representative and may not reflect the exact dimensions of all units within the building.

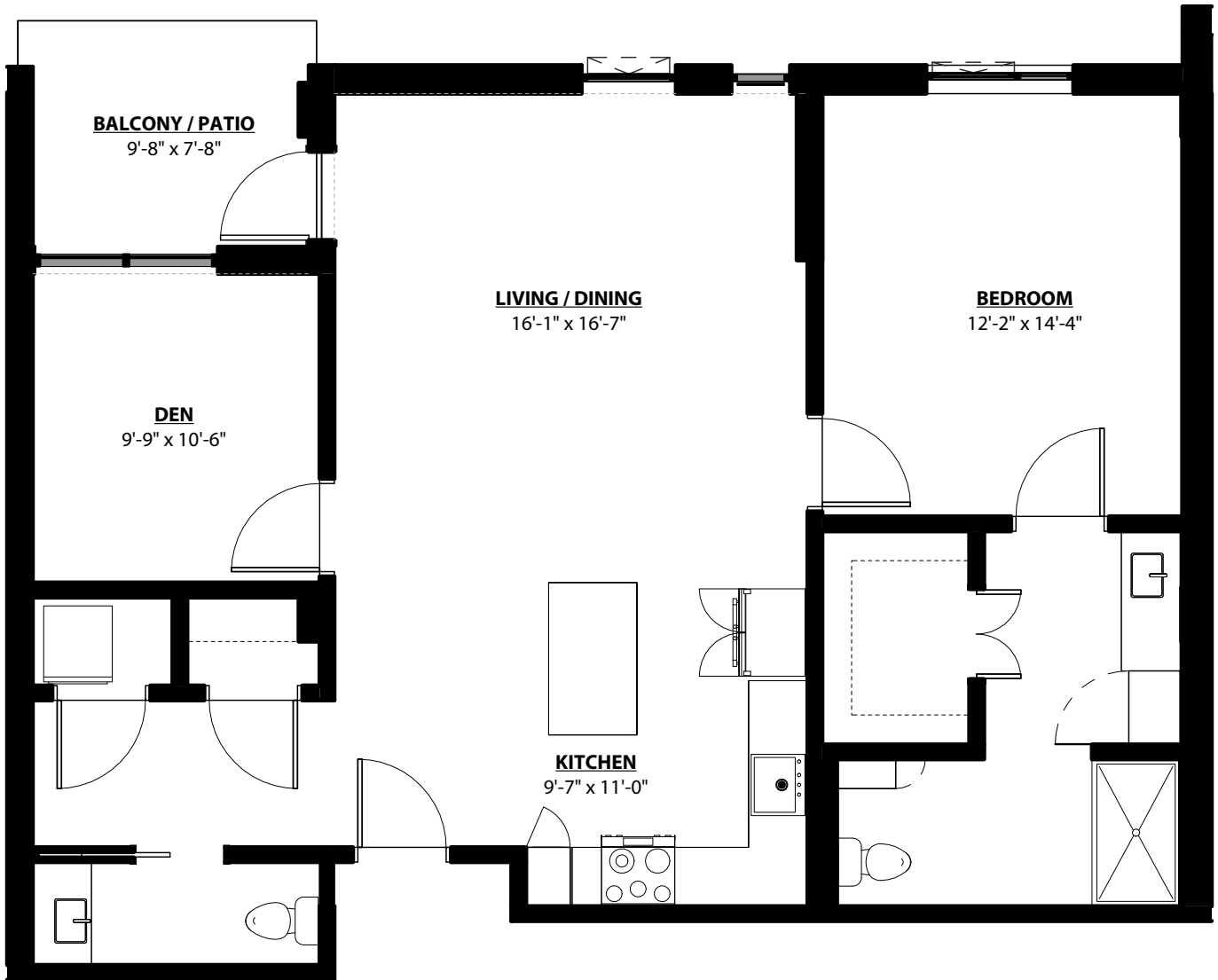


Per Health and Safety Code section 1772.2, Kendal at Ventura has filed an application for a Permit to Accept Deposits and a Certificate of Authority with the California Department of Social Services.

**Enso Verde**<sup>SM</sup>  
A KENDAL AFFILIATE

# Daisy B

1 BEDROOM • 1.5 BATH • DEN • 1,080 SQ. FT.



All unit plans are representative and may not reflect the exact dimensions of all units within the building.

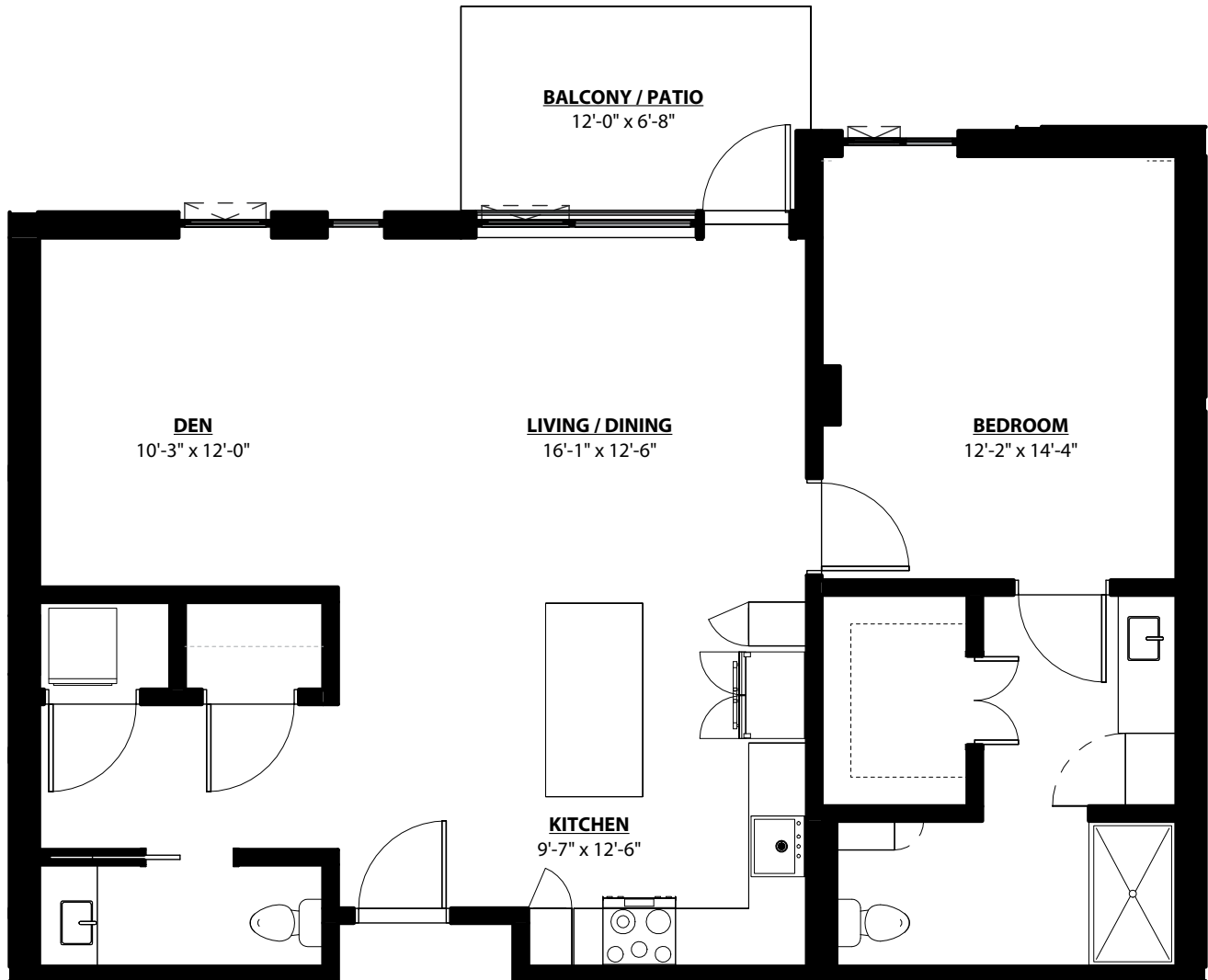


Per Health and Safety Code section 1772.2, Kendal at Ventura has filed an application for a Permit to Accept Deposits and a Certificate of Authority with the California Department of Social Services.

**Enso Verde**<sup>SM</sup>  
A KENDAL AFFILIATE

# Daisy C

1 BEDROOM • 1.5 BATH • DEN • 1,051 SQ. FT.

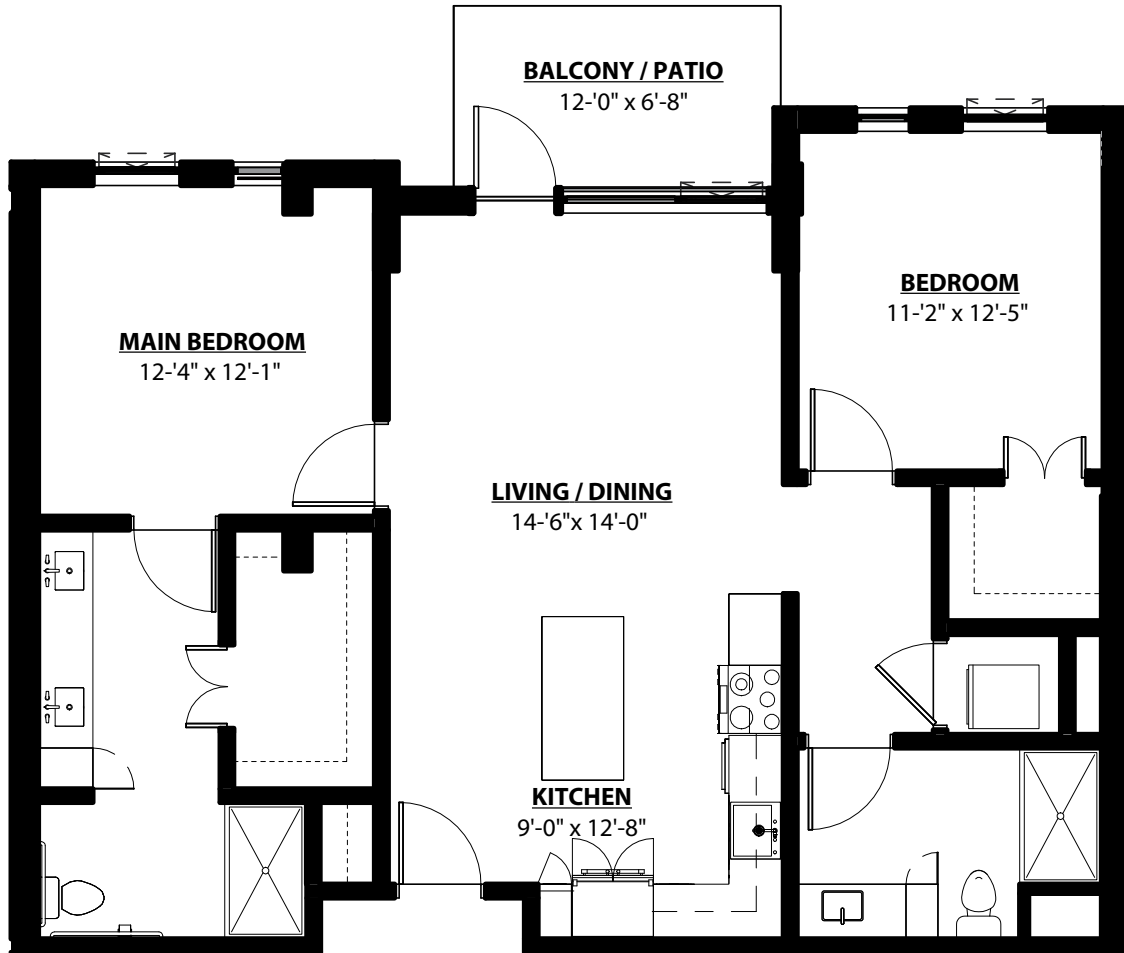


All unit plans are representative and may not reflect the exact dimensions of all units within the building.



Per Health and Safety Code section 1772.2, Kendal at Ventura has filed an application for a Permit to Accept Deposits and a Certificate of Authority with the California Department of Social Services.

**Enso Verde**<sup>SM</sup>  
A KENDAL AFFILIATE



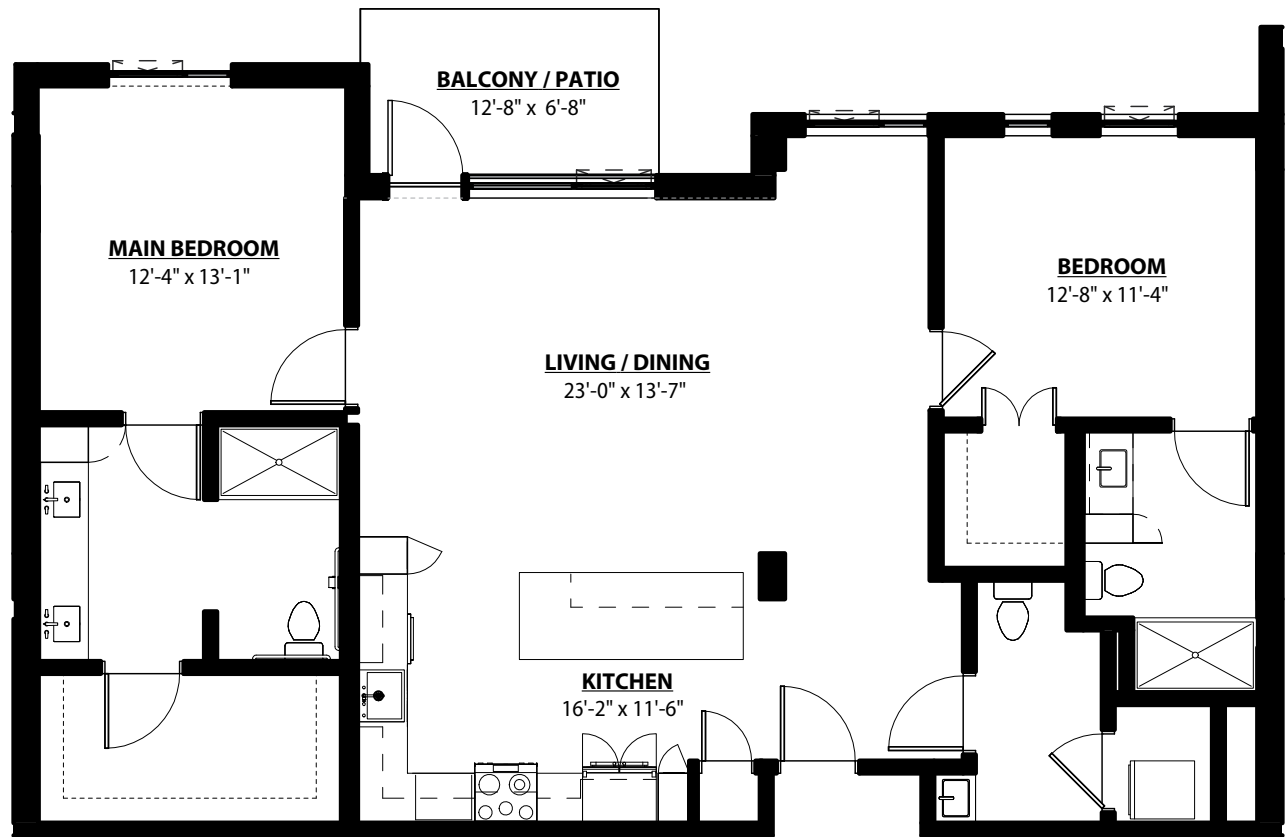
All unit plans are representative and may not reflect the exact dimensions of all units within the building.



Per Health and Safety Code section 1772.2, Kendal at Ventura has filed an application for a Permit to Accept Deposits and a Certificate of Authority with the California Department of Social Services.

# Lupine A

2 BEDROOM • 2.5 BATH • 1,385 SQ. FT.



All unit plans are representative and may not reflect the exact dimensions of all units within the building.



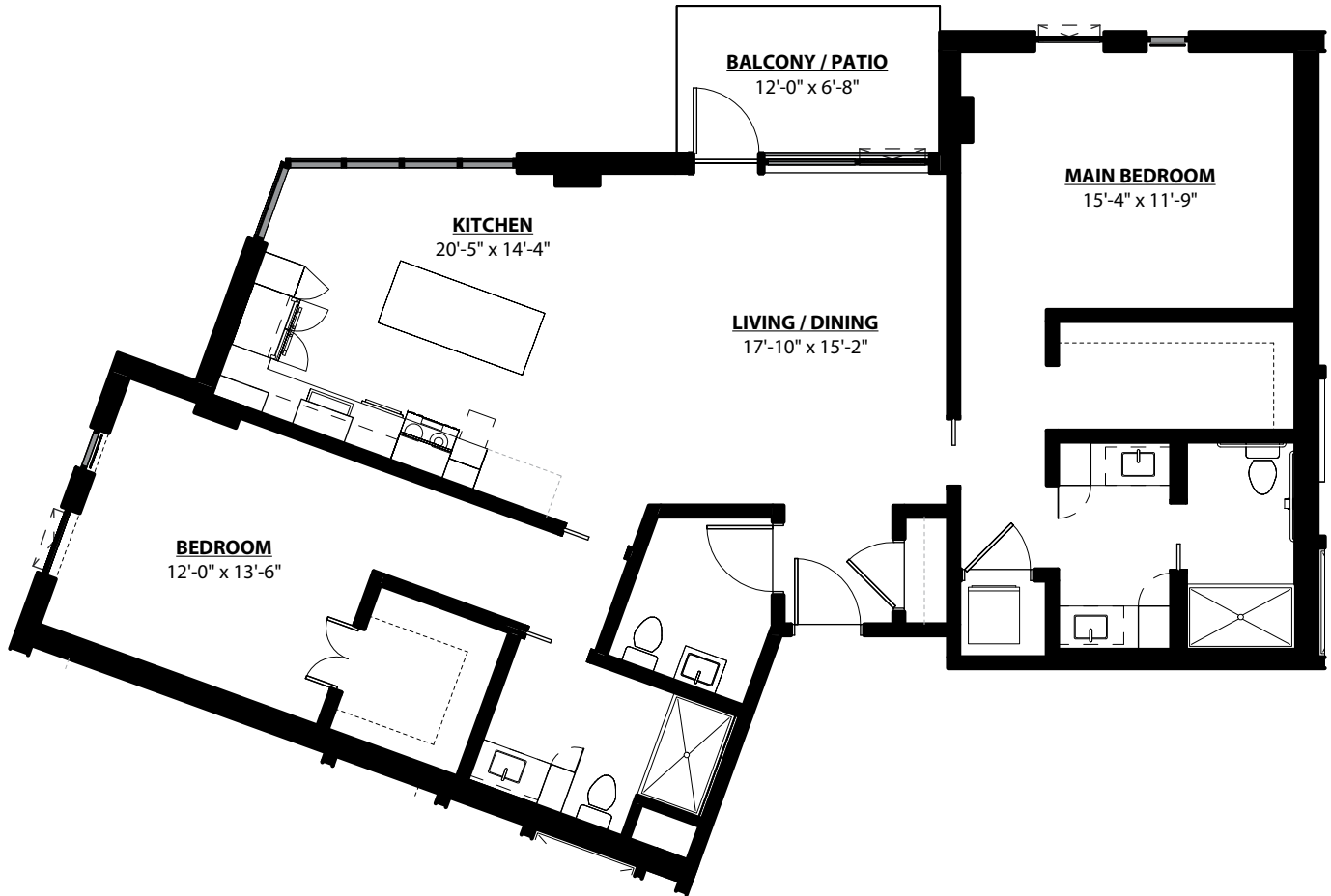
Per Health and Safety Code section 1772.2, Kendal at Ventura has filed an application for a Permit to Accept Deposits and a Certificate of Authority with the California Department of Social Services.

**Enso Verde**<sup>SM</sup>  
A KENDAL AFFILIATE



# Lupine B

2 BEDROOM • 2.5 BATH • 1,423 SQ. FT.



All unit plans are representative and may not reflect the exact dimensions of all units within the building.

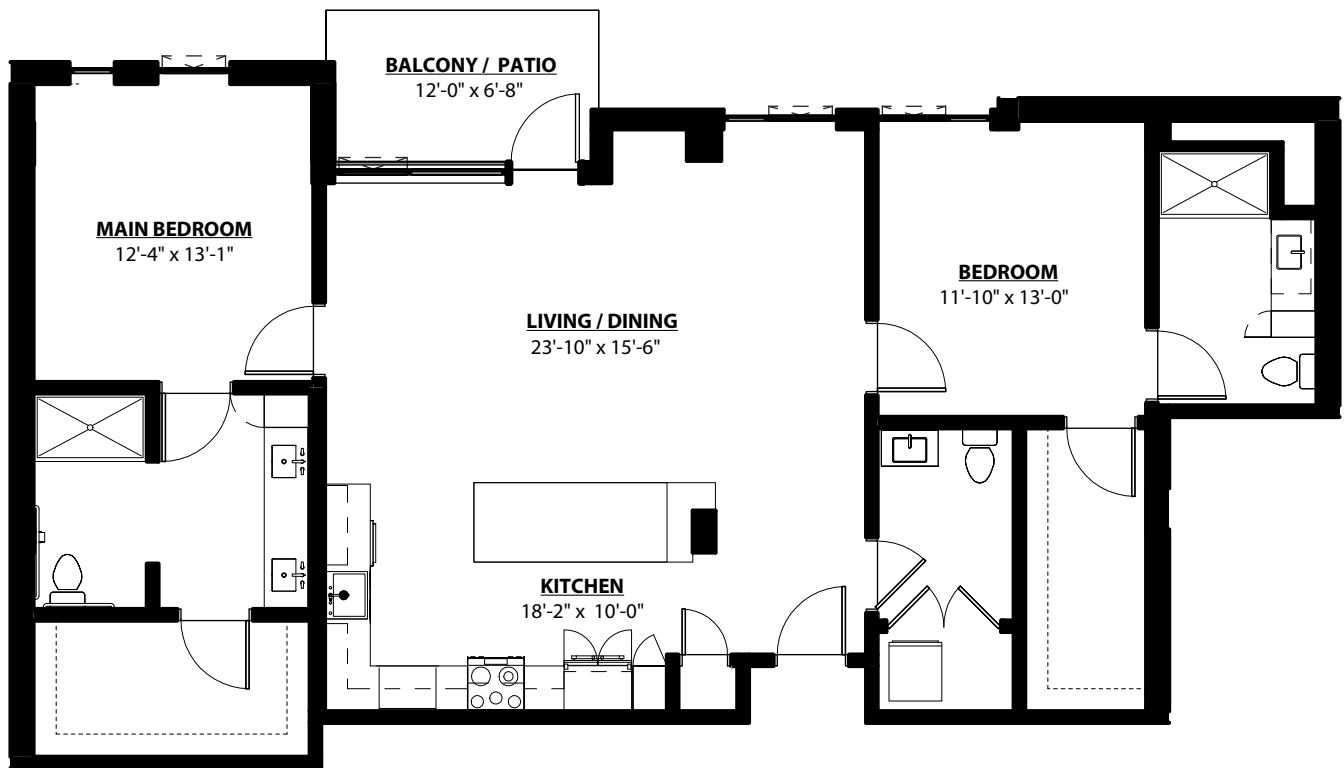


Per Health and Safety Code section 1772.2, Kendal at Ventura has filed an application for a Permit to Accept Deposits and a Certificate of Authority with the California Department of Social Services.

**Enso Verde**<sup>SM</sup>  
A KENDAL AFFILIATE

# Lupine C

2 BEDROOM • 2.5 BATH • 1,429 SQ. FT.



All unit plans are representative and may not reflect the exact dimensions of all units within the building.

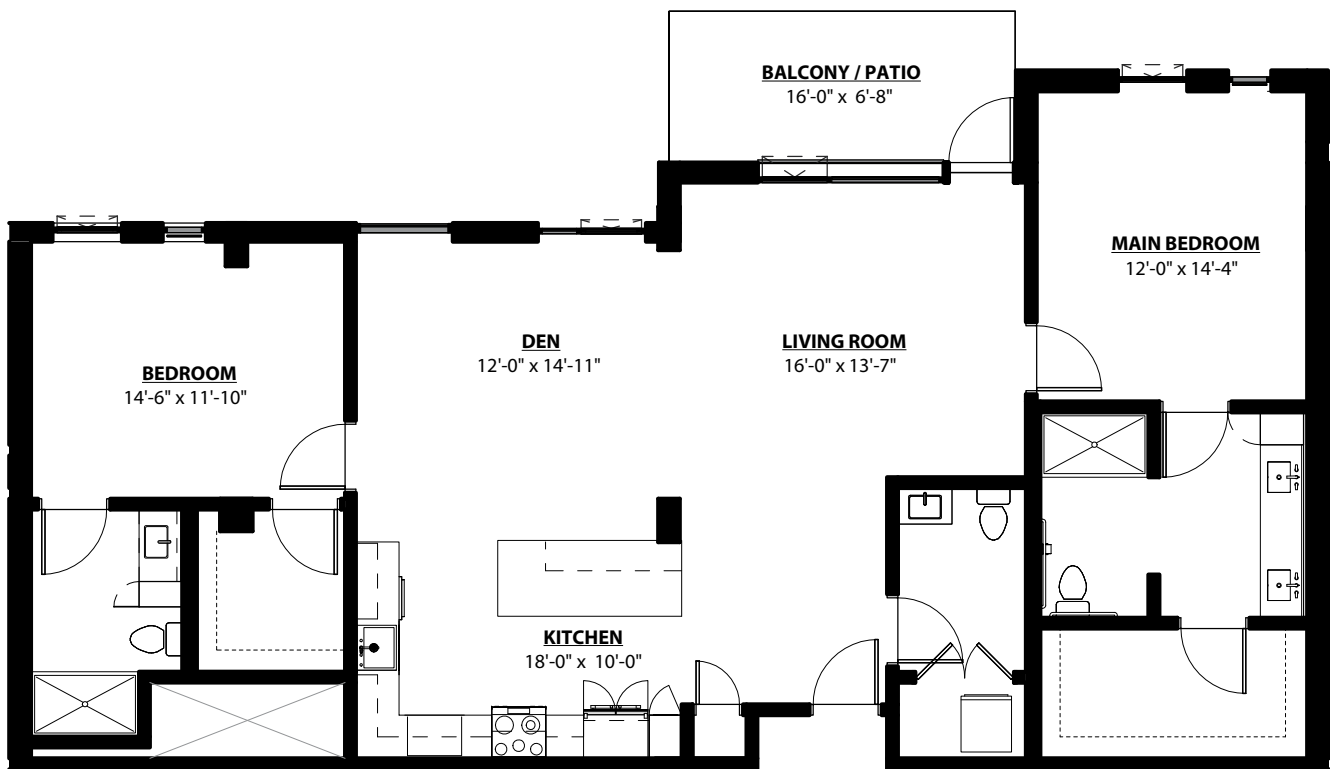


Per Health and Safety Code section 1772.2, Kendal at Ventura has filed an application for a Permit to Accept Deposits and a Certificate of Authority with the California Department of Social Services.

**Enso Verde**<sup>SM</sup>  
A KENDAL AFFILIATE

# Mariposa

2 BEDROOM • 2.5 BATH • DEN • 1,554 SQ. FT.



All unit plans are representative and may not reflect the exact dimensions of all units within the building.

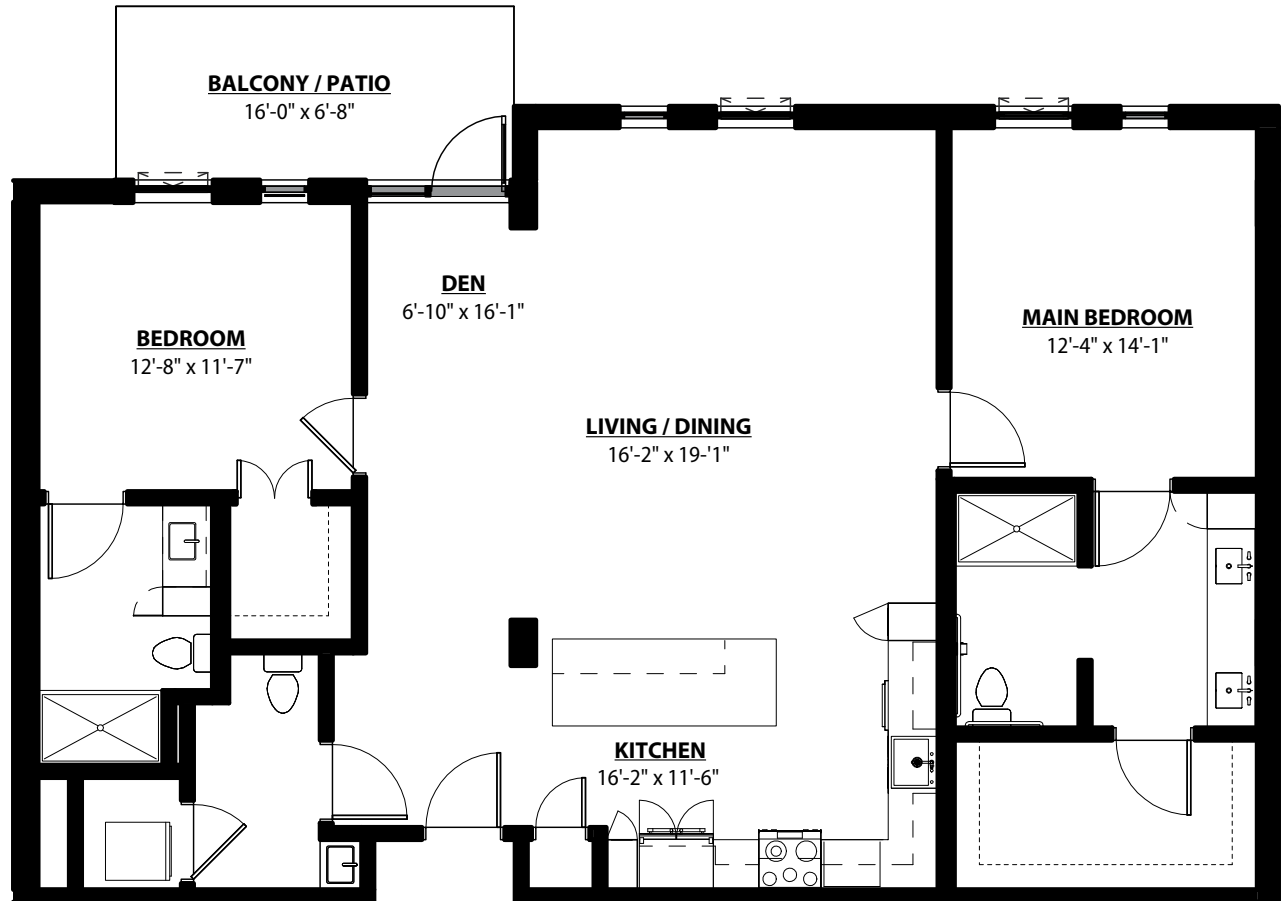


Per Health and Safety Code section 1772.2, Kendal at Ventura has filed an application for a Permit to Accept Deposits and a Certificate of Authority with the California Department of Social Services.

**Enso Verde**<sup>SM</sup>  
A KENDAL AFFILIATE

# Morning Glory A

2 BEDROOM • 2.5 BATH • DEN • 1,488 SQ. FT.



All unit plans are representative and may not reflect the exact dimensions of all units within the building.

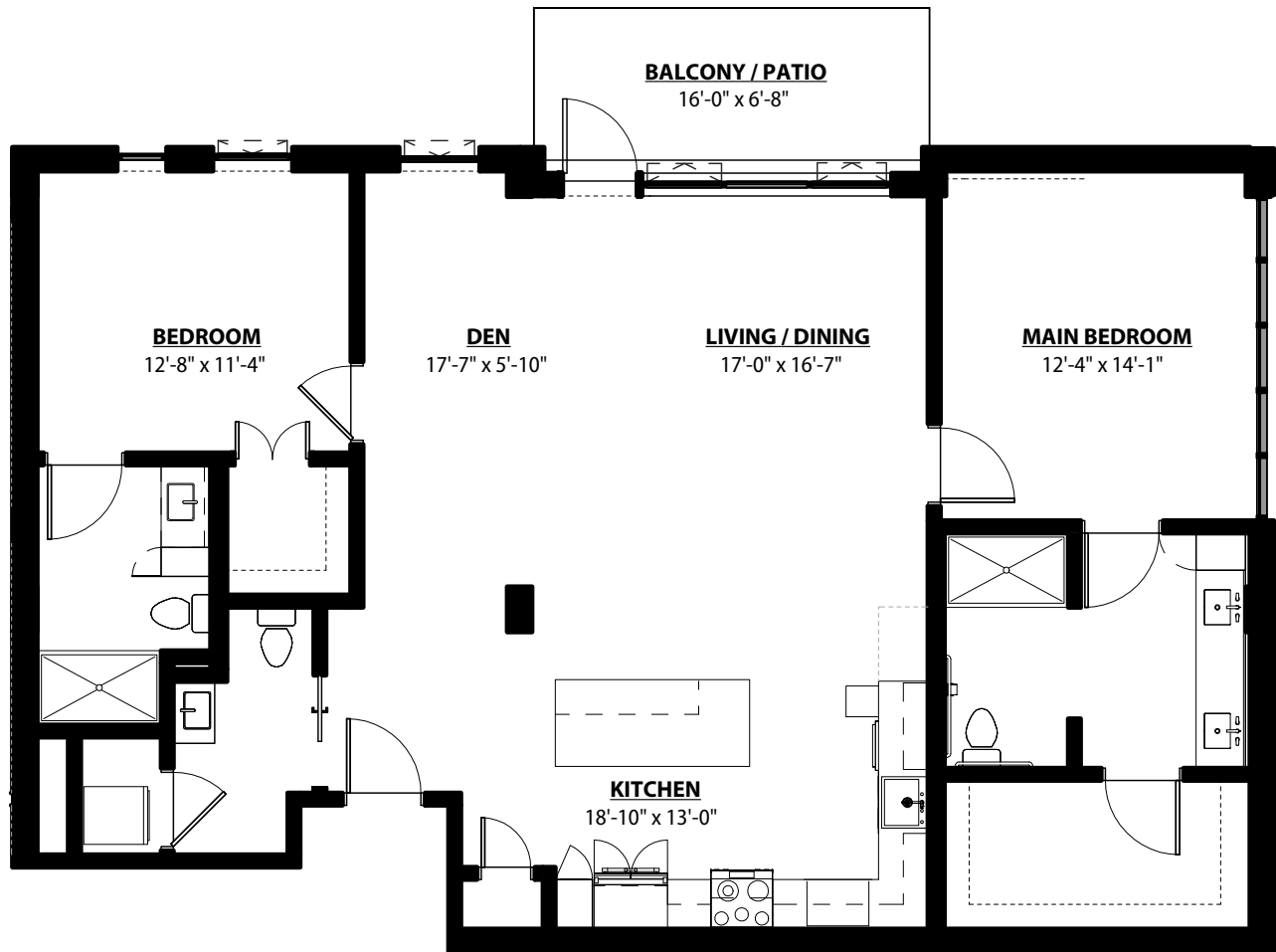


Per Health and Safety Code section 1772.2, Kendal at Ventura has filed an application for a Permit to Accept Deposits and a Certificate of Authority with the California Department of Social Services.

**Enso Verde**<sup>SM</sup>  
A KENDAL AFFILIATE

# Morning Glory B

2 BEDROOM • 2.5 BATH • DEN • 1,486 SQ. FT.



All unit plans are representative and may not reflect the exact dimensions of all units within the building.

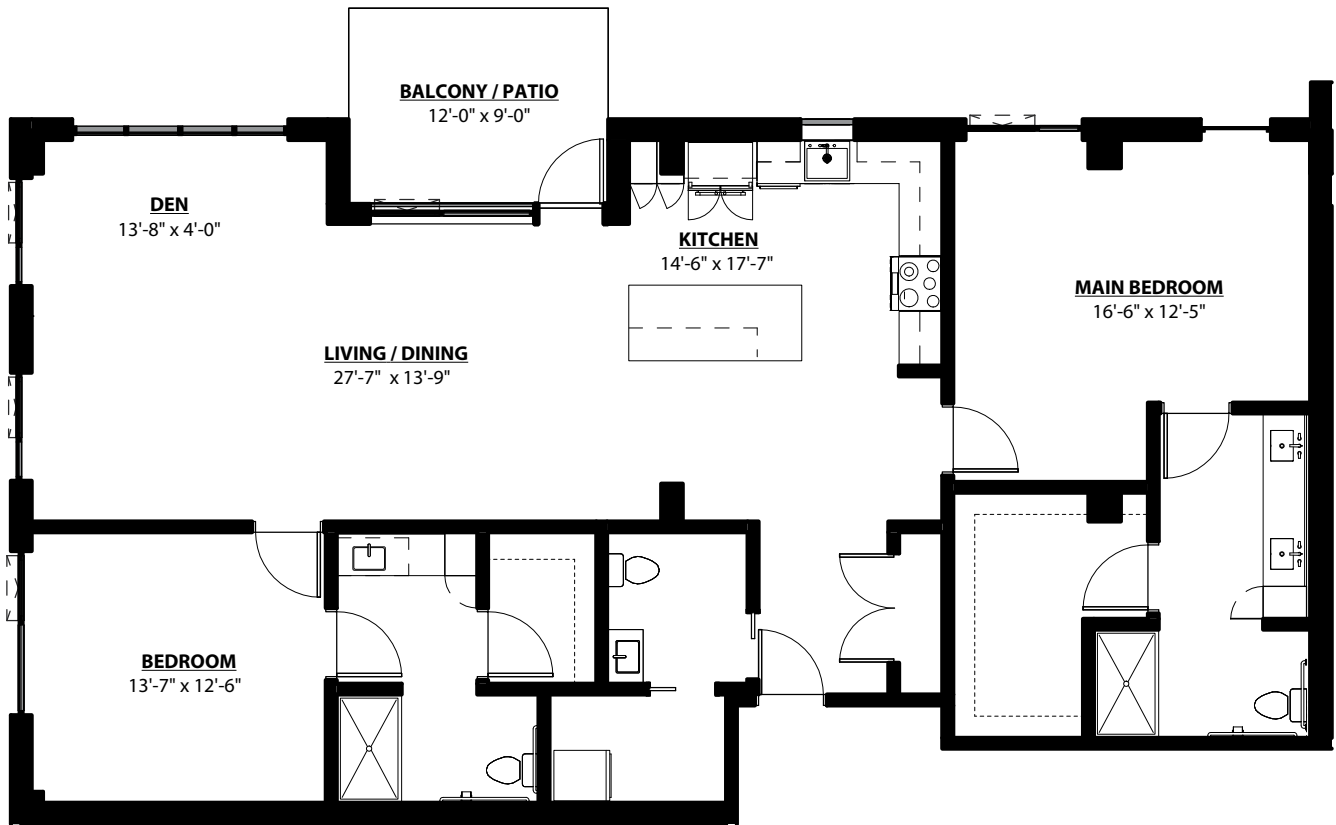


Per Health and Safety Code section 1772.2, Kendal at Ventura has filed an application for a Permit to Accept Deposits and a Certificate of Authority with the California Department of Social Services.

**Enso Verde**<sup>SM</sup>  
A KENDAL AFFILIATE

# Poppy A

2 BEDROOM • 2.5 BATH • DEN • 1,740 SQ. FT.



All unit plans are representative and may not reflect the exact dimensions of all units within the building.

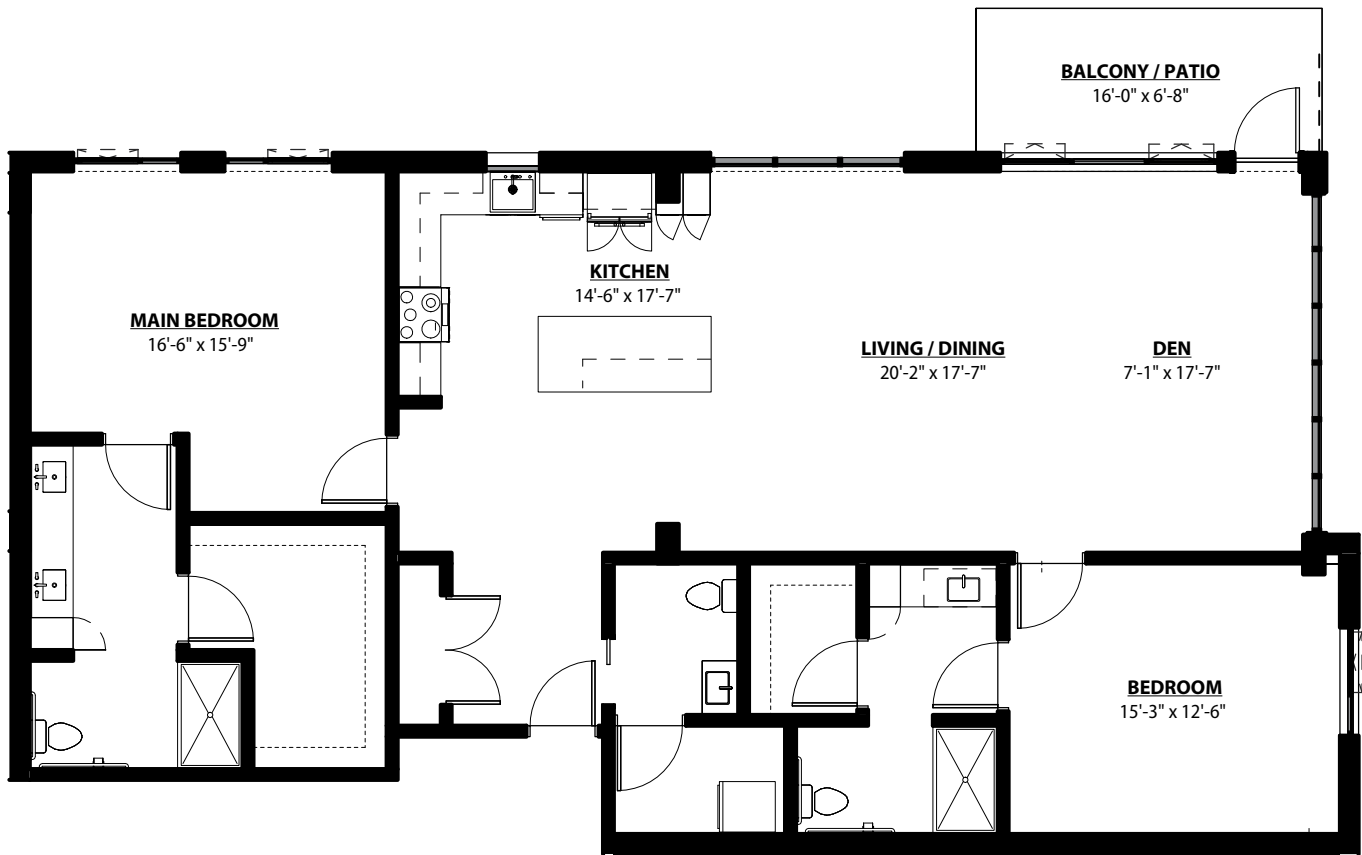


Per Health and Safety Code section 1772.2, Kendal at Ventura has filed an application for a Permit to Accept Deposits and a Certificate of Authority with the California Department of Social Services.

**Enso Verde**<sup>SM</sup>  
A KENDAL AFFILIATE

# Poppy B

2 BEDROOM • 2.5 BATH • DEN • 1,809 SQ. FT.



All unit plans are representative and may not reflect the exact dimensions of all units within the building.

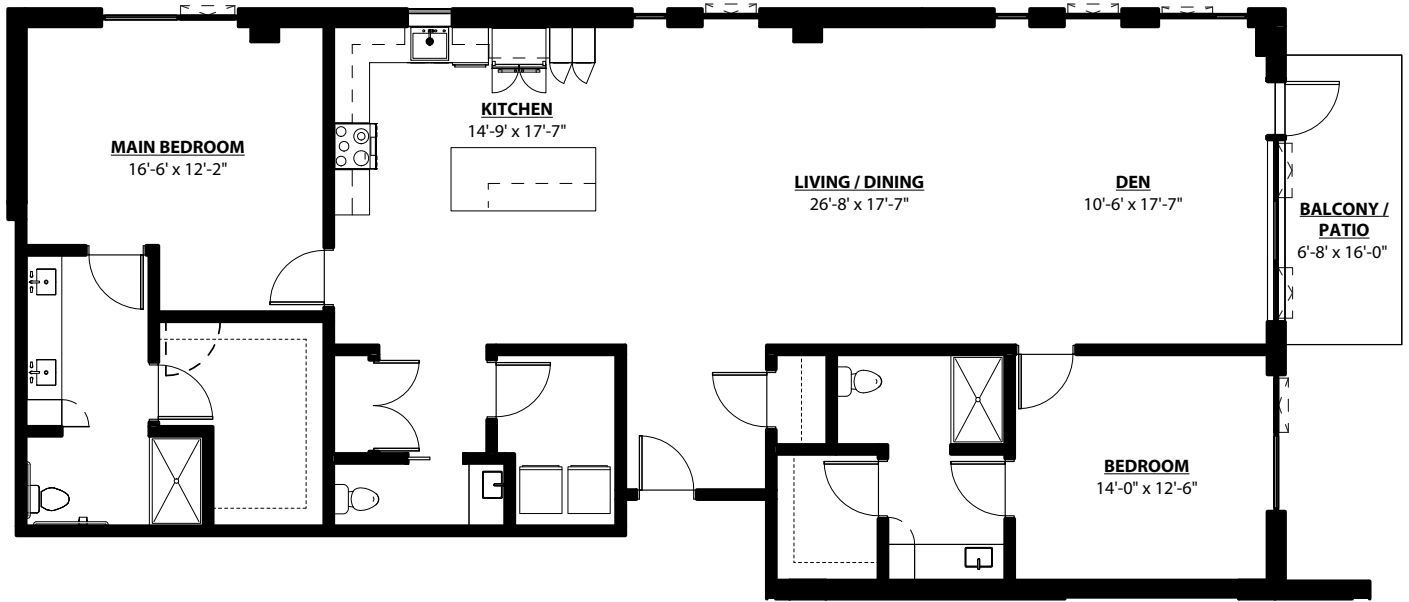


Per Health and Safety Code section 1772.2, Kendal at Ventura has filed an application for a Permit to Accept Deposits and a Certificate of Authority with the California Department of Social Services.

**Enso Verde**<sup>SM</sup>  
A KENDAL AFFILIATE

# Sage A

2 BEDROOM • 2.5 BATH • DEN • 2,043 SQ. FT.



All unit plans are representative and may not reflect the exact dimensions of all units within the building.



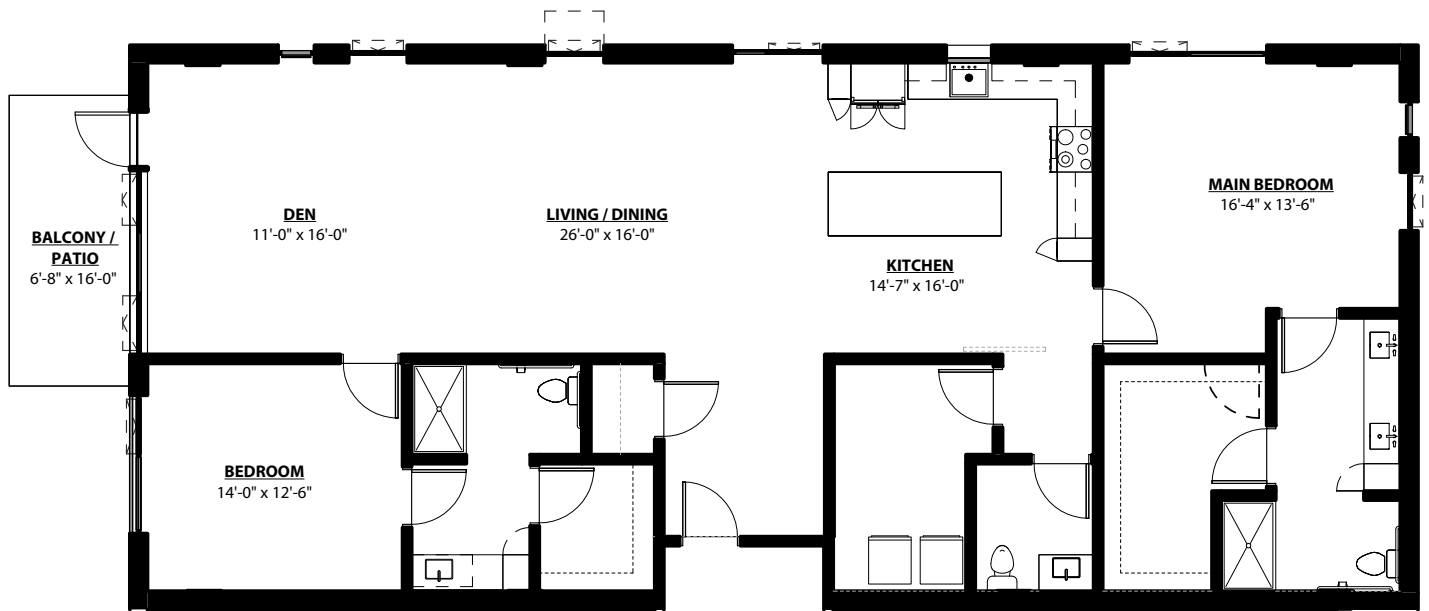
Per Health and Safety Code section 1772.2, Kendal at Ventura has filed an application for a Permit to Accept Deposits and a Certificate of Authority with the California Department of Social Services.

**Enso Verde**<sup>SM</sup>  
A KENDAL AFFILIATE



# Sage B

2 BEDROOM • 2.5 BATH • DEN • 2,060 SQ. FT.



All unit plans are representative and may not reflect the exact dimensions of all units within the building.

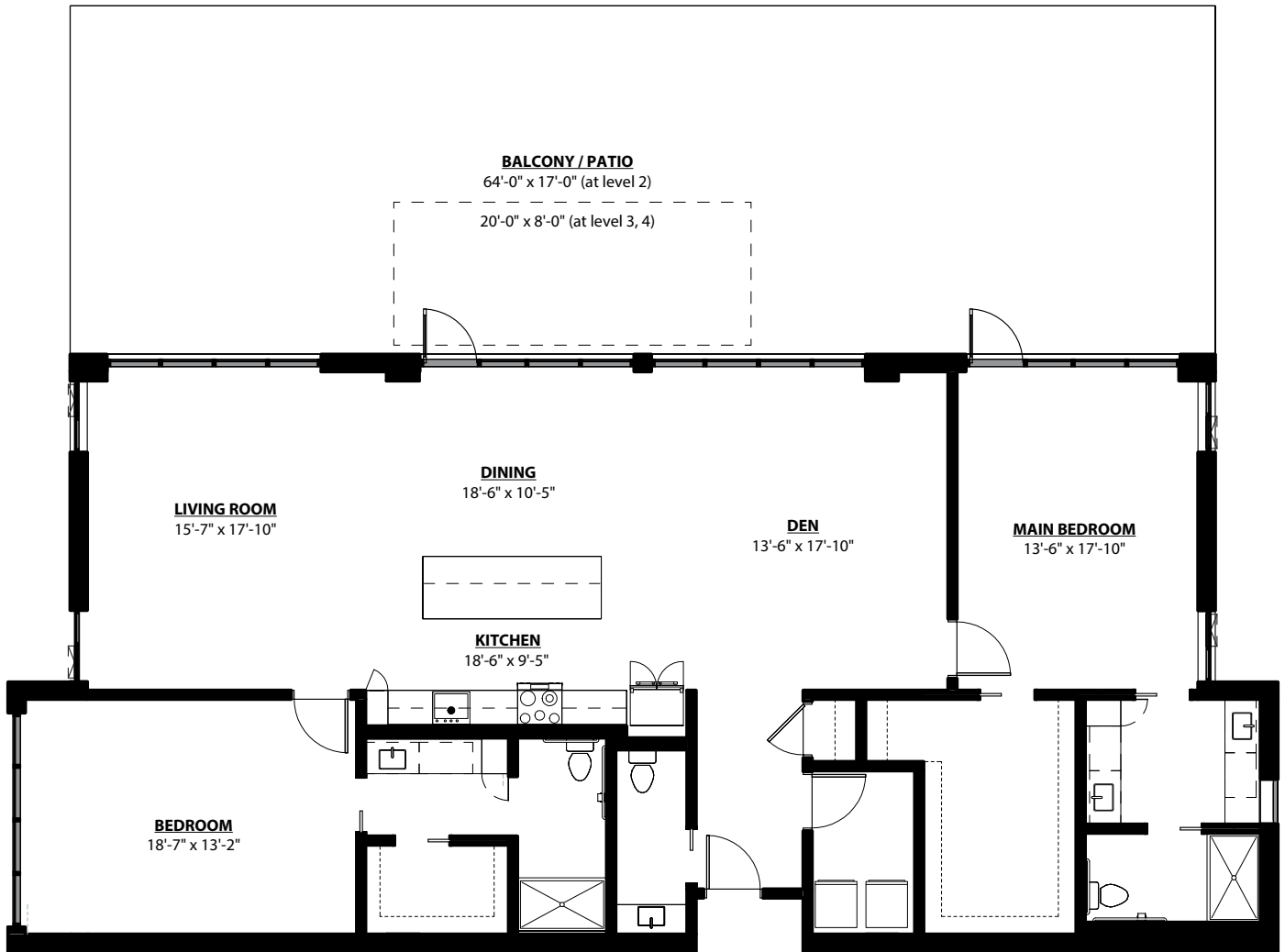


Per Health and Safety Code section 1772.2, Kendal at Ventura has filed an application for a Permit to Accept Deposits and a Certificate of Authority with the California Department of Social Services.

**Enso Verde**<sup>SM</sup>  
A KENDAL AFFILIATE

# Sun Cup

2 BEDROOM • 2.5 BATH • DEN • 2,133 SQ. FT.



All unit plans are representative and may not reflect the exact dimensions of all units within the building.



Per Health and Safety Code section 1772.2, Kendal at Ventura has filed an application for a Permit to Accept Deposits and a Certificate of Authority with the California Department of Social Services.

**Enso Verde**<sup>SM</sup>  
A KENDAL AFFILIATE