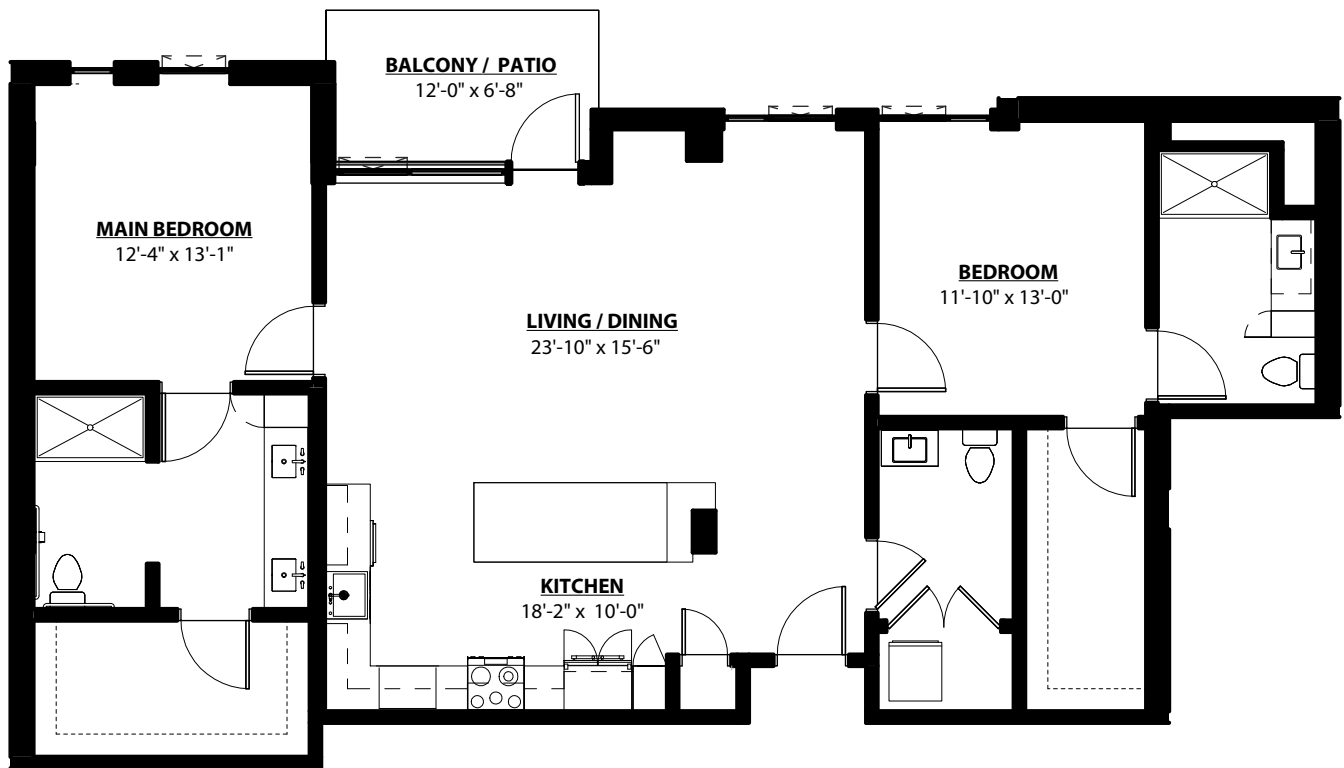


# Lupine C

2 BEDROOM • 2.5 BATH • 1,429 SQ. FT.



All unit plans are representative and may not reflect the exact dimensions of all units within the building.



Per Health and Safety Code section 1772.2, Kendal at Ventura has filed an application for a Permit to Accept Deposits and a Certificate of Authority with the California Department of Social Services.

**Enso Verde**<sup>SM</sup>  
A KENDAL AFFILIATE