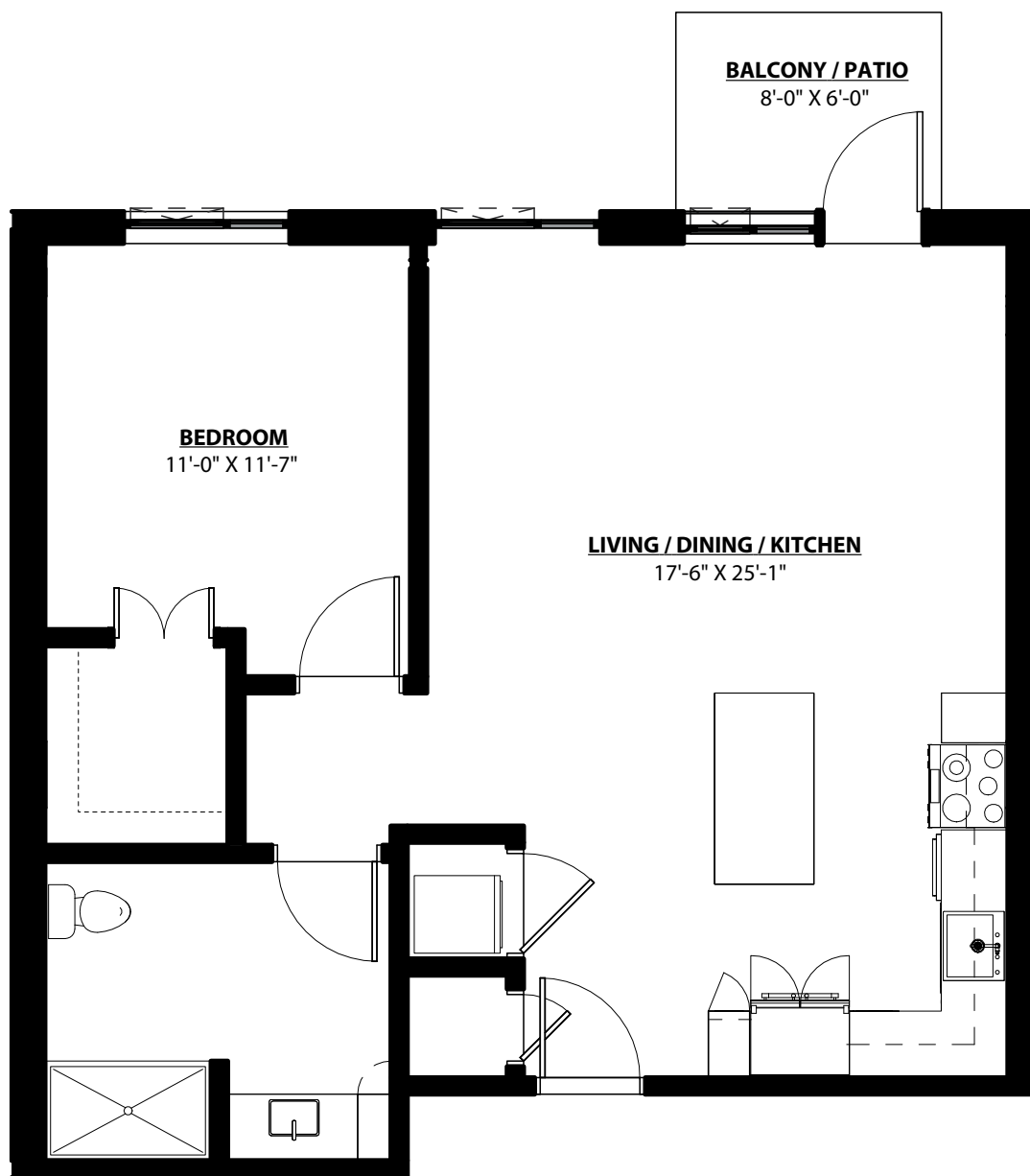


Agave A

1 BEDROOM • 1 BATH • 803 SQ. FT.

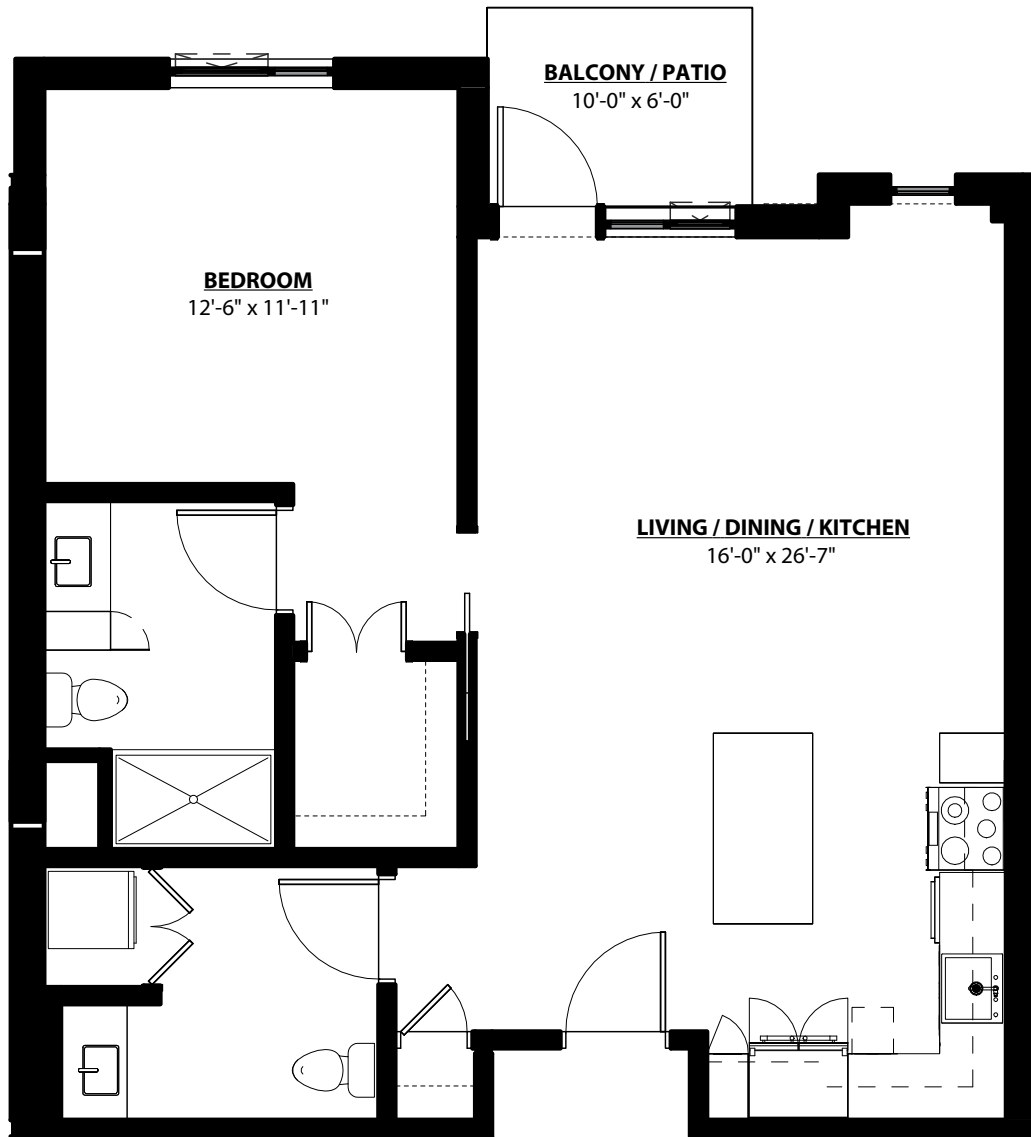


All unit plans are representative and may not reflect the exact dimensions of all units within the building.



Per Health and Safety Code section 1772.2, Kendal at Ventura has filed an application for a Permit to Accept Deposits and a Certificate of Authority with the California Department of Social Services.

Enso VerdeSM
A KENDAL AFFILIATE



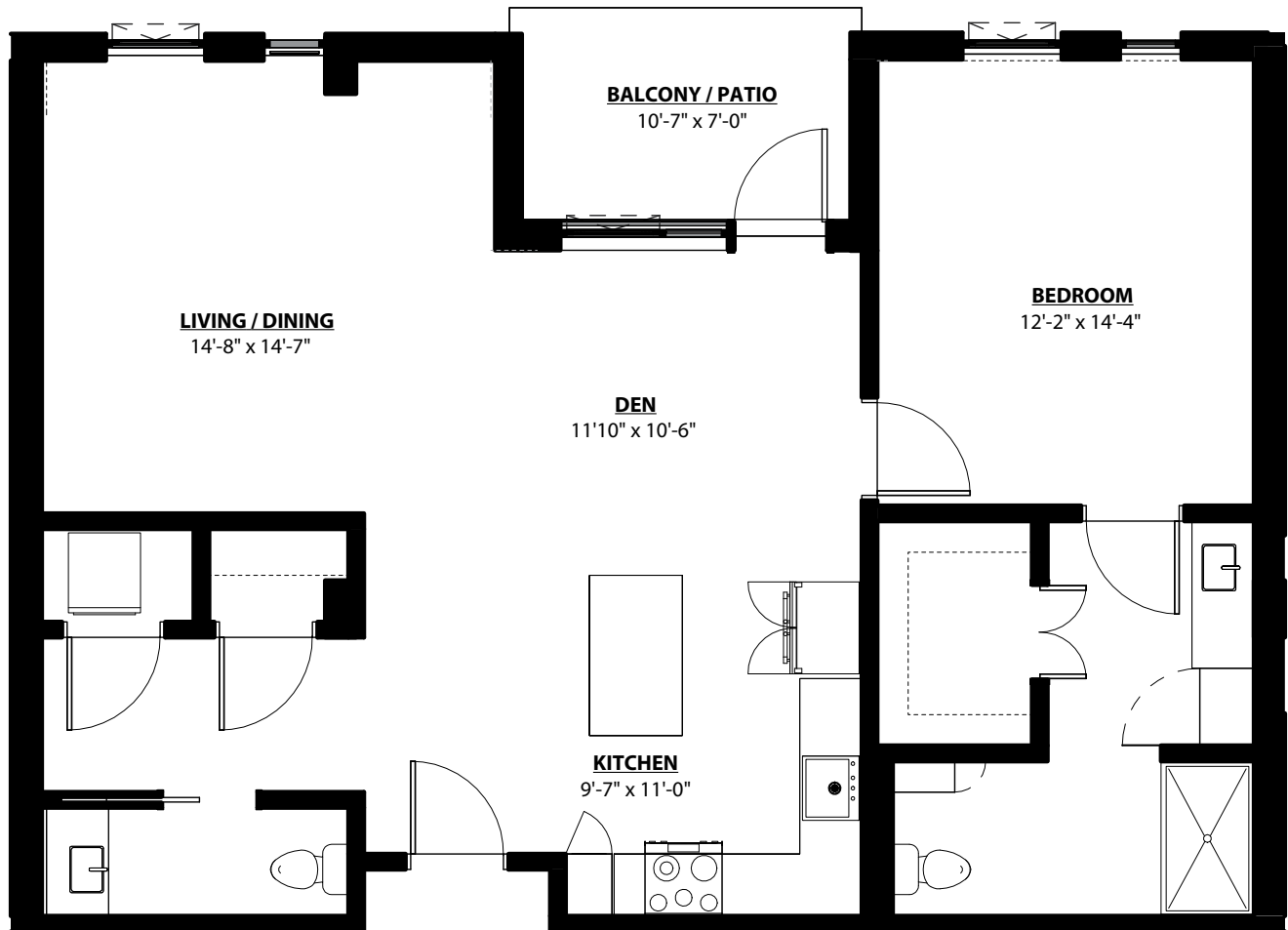
All unit plans are representative and may not reflect the exact dimensions of all units within the building.



Per Health and Safety Code section 1772.2, Kendal at Ventura has filed an application for a Permit to Accept Deposits and a Certificate of Authority with the California Department of Social Services.

Daisy A

1 BEDROOM • 1.5 BATH • DEN • 1,047 SQ. FT.



All unit plans are representative and may not reflect the exact dimensions of all units within the building.

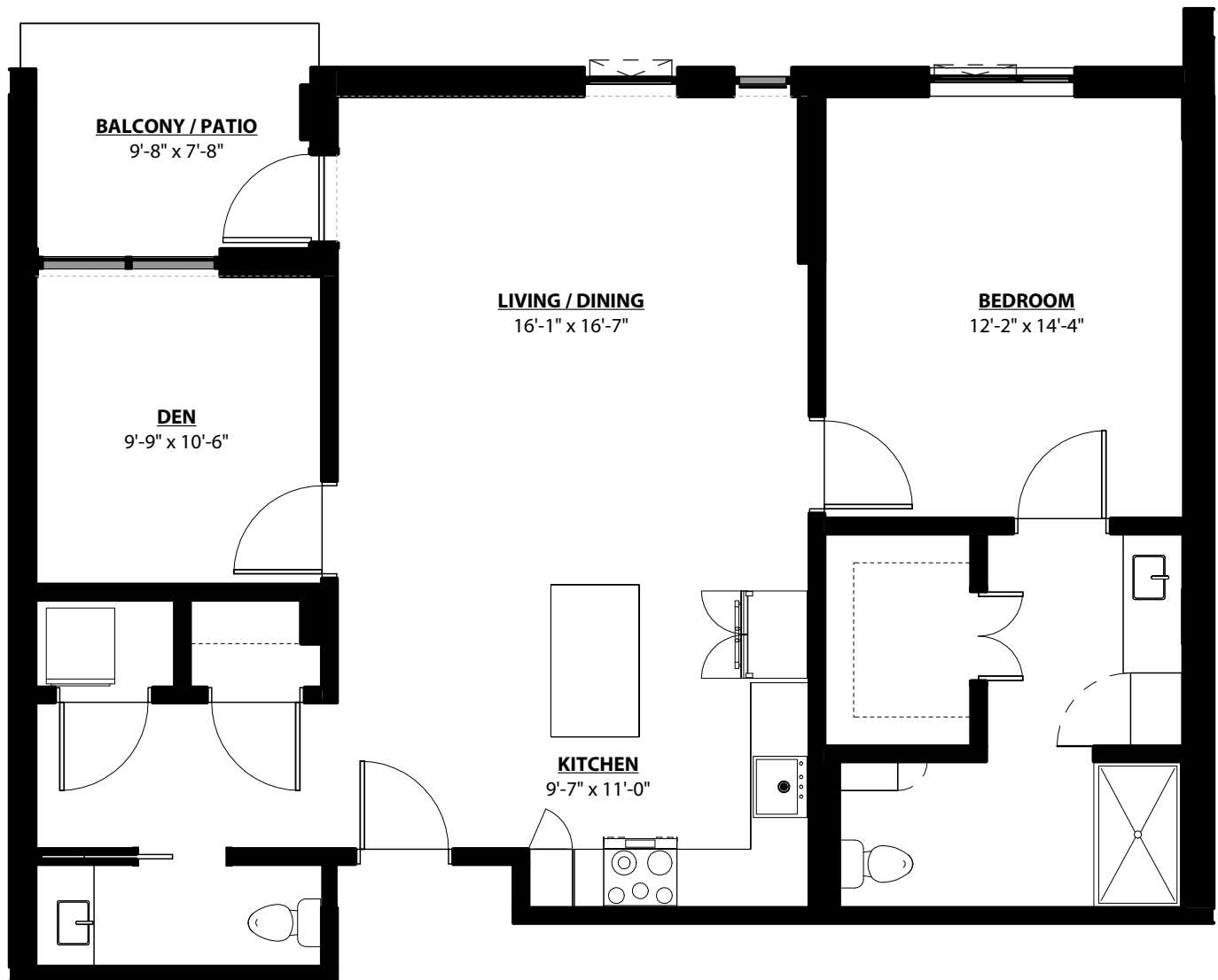


Per Health and Safety Code section 1772.2, Kendal at Ventura has filed an application for a Permit to Accept Deposits and a Certificate of Authority with the California Department of Social Services.

Enso VerdeSM
A KENDAL AFFILIATE

Daisy B

1 BEDROOM • 1.5 BATH • DEN • 1,080 SQ. FT.



All unit plans are representative and may not reflect the exact dimensions of all units within the building.

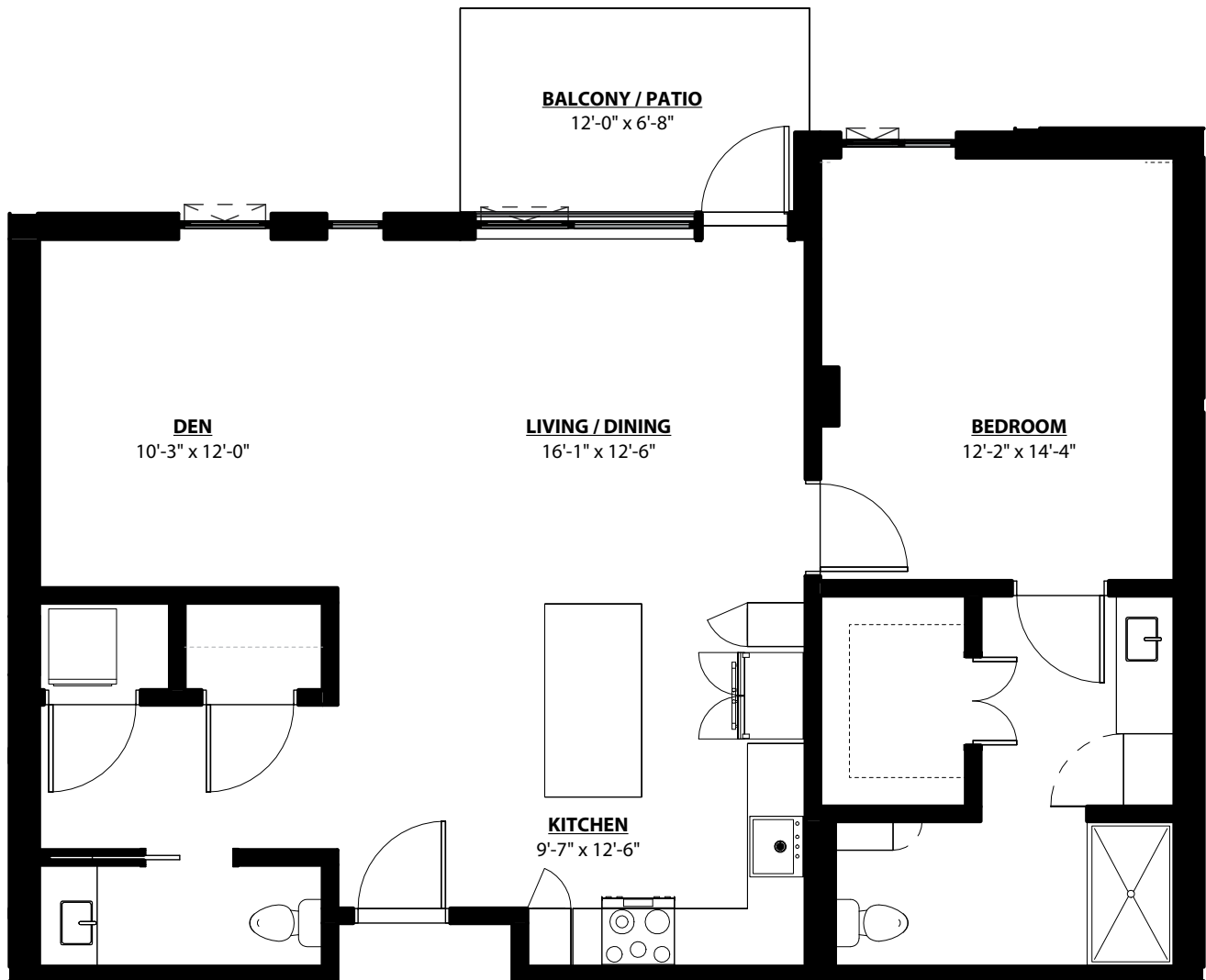


Per Health and Safety Code section 1772.2, Kendal at Ventura has filed an application for a Permit to Accept Deposits and a Certificate of Authority with the California Department of Social Services.

Enso VerdeSM
A KENDAL AFFILIATE

Daisy C

1 BEDROOM • 1.5 BATH • DEN • 1,051 SQ. FT.

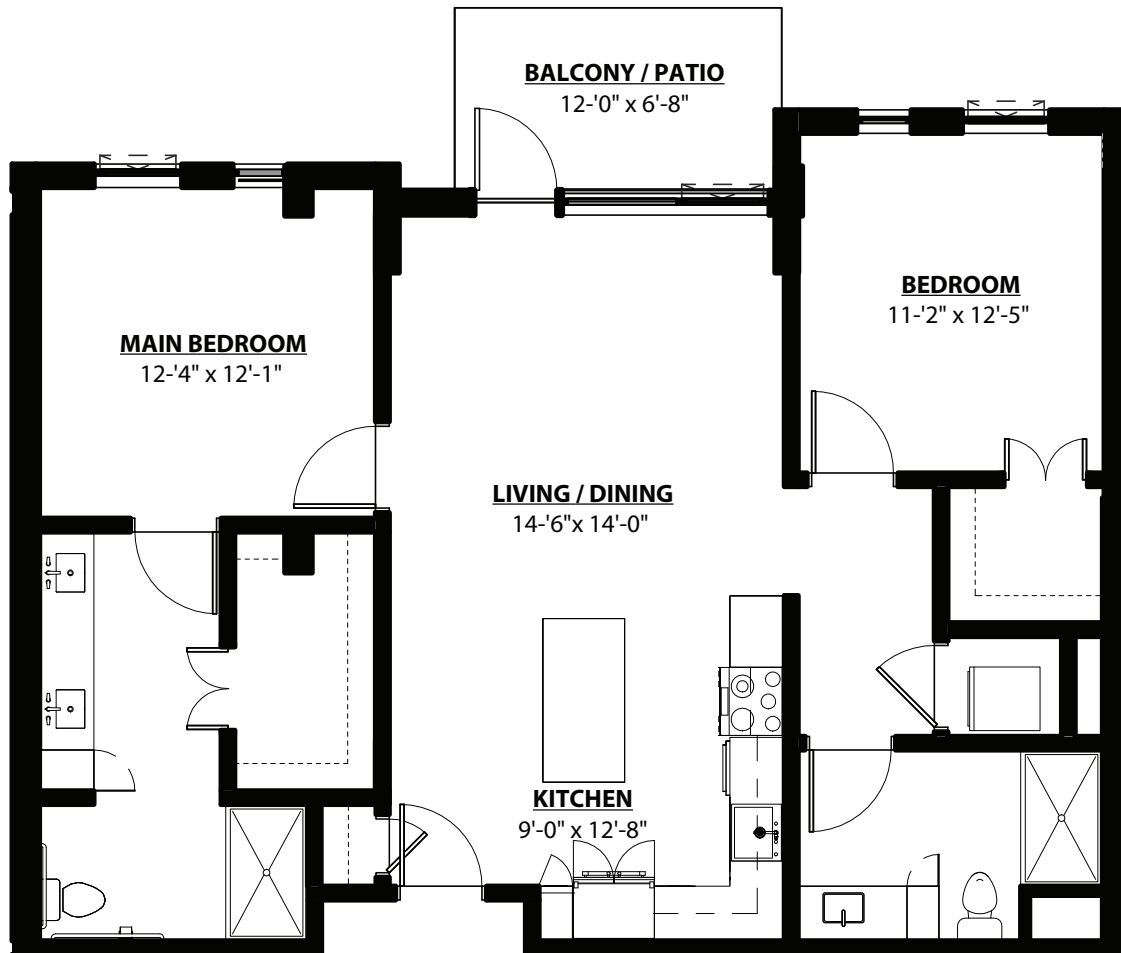


All unit plans are representative and may not reflect the exact dimensions of all units within the building.



Per Health and Safety Code section 1772.2, Kendal at Ventura has filed an application for a Permit to Accept Deposits and a Certificate of Authority with the California Department of Social Services.

Enso VerdeSM
A KENDAL AFFILIATE



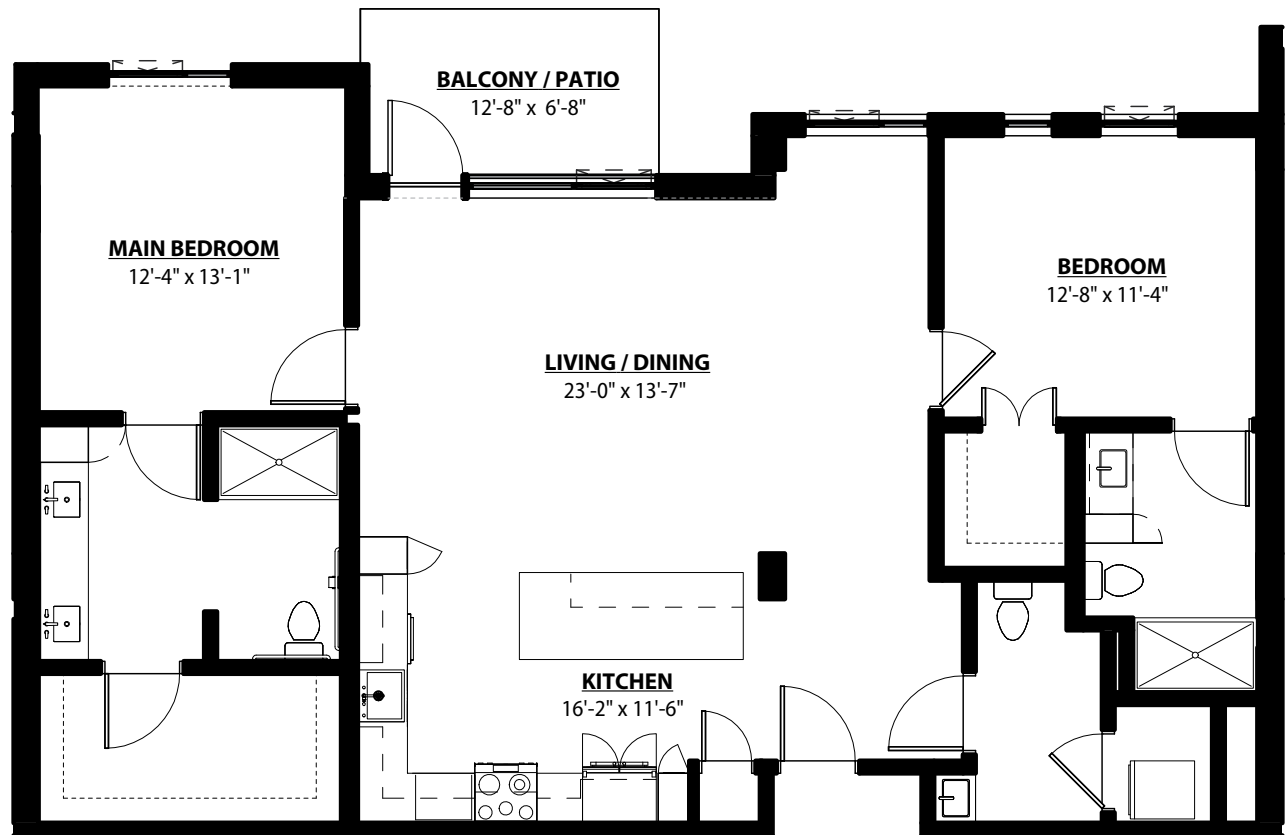
All unit plans are representative and may not reflect the exact dimensions of all units within the building.



Per Health and Safety Code section 1772.2, Kendal at Ventura has filed an application for a Permit to Accept Deposits and a Certificate of Authority with the California Department of Social Services.

Lupine A

2 BEDROOM • 2.5 BATH • 1,385 SQ. FT.



All unit plans are representative and may not reflect the exact dimensions of all units within the building.

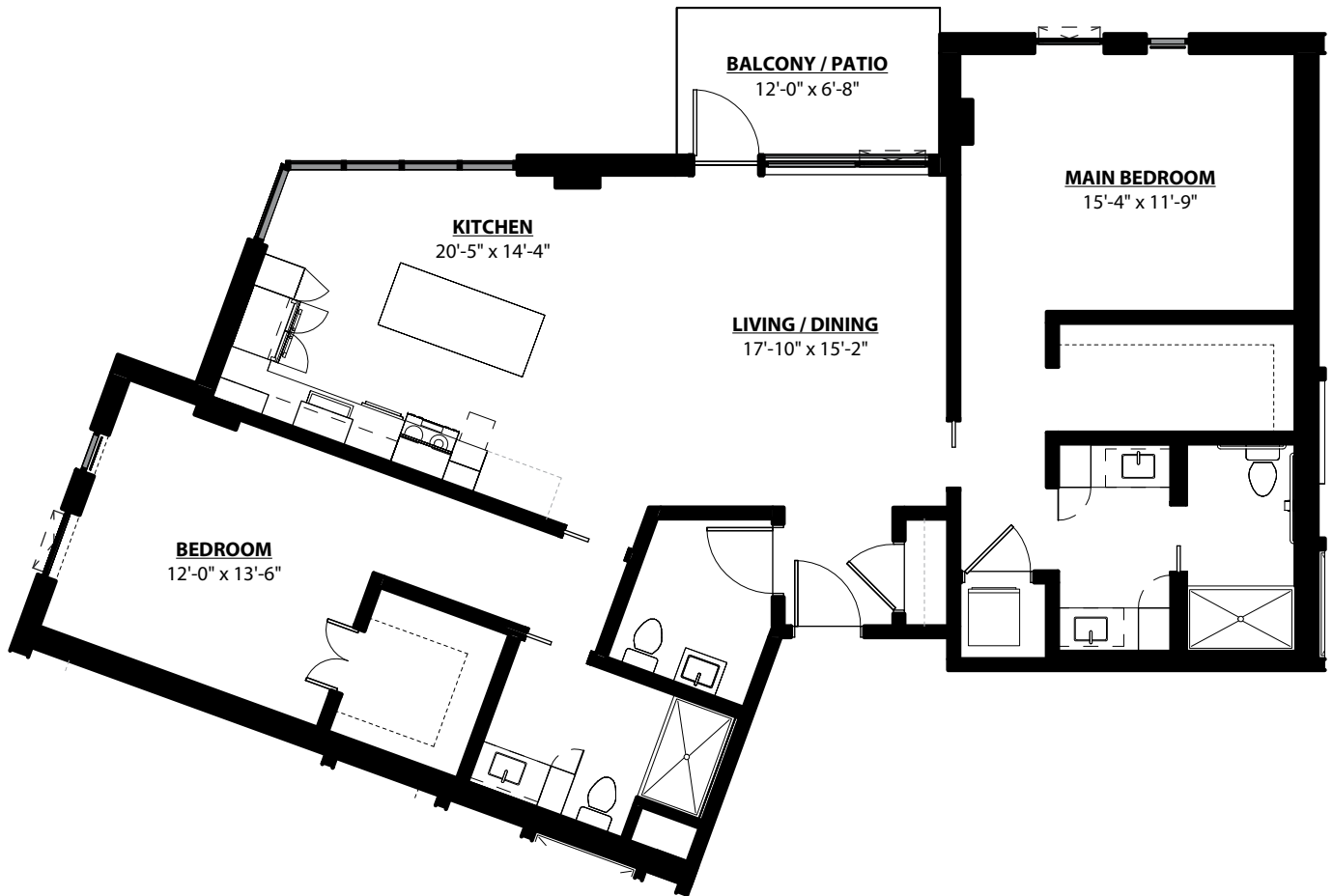


Per Health and Safety Code section 1772.2, Kendal at Ventura has filed an application for a Permit to Accept Deposits and a Certificate of Authority with the California Department of Social Services.

Enso VerdeSM
A KENDAL AFFILIATE

Lupine B

2 BEDROOM • 2.5 BATH • 1,423 SQ. FT.



All unit plans are representative and may not reflect the exact dimensions of all units within the building.

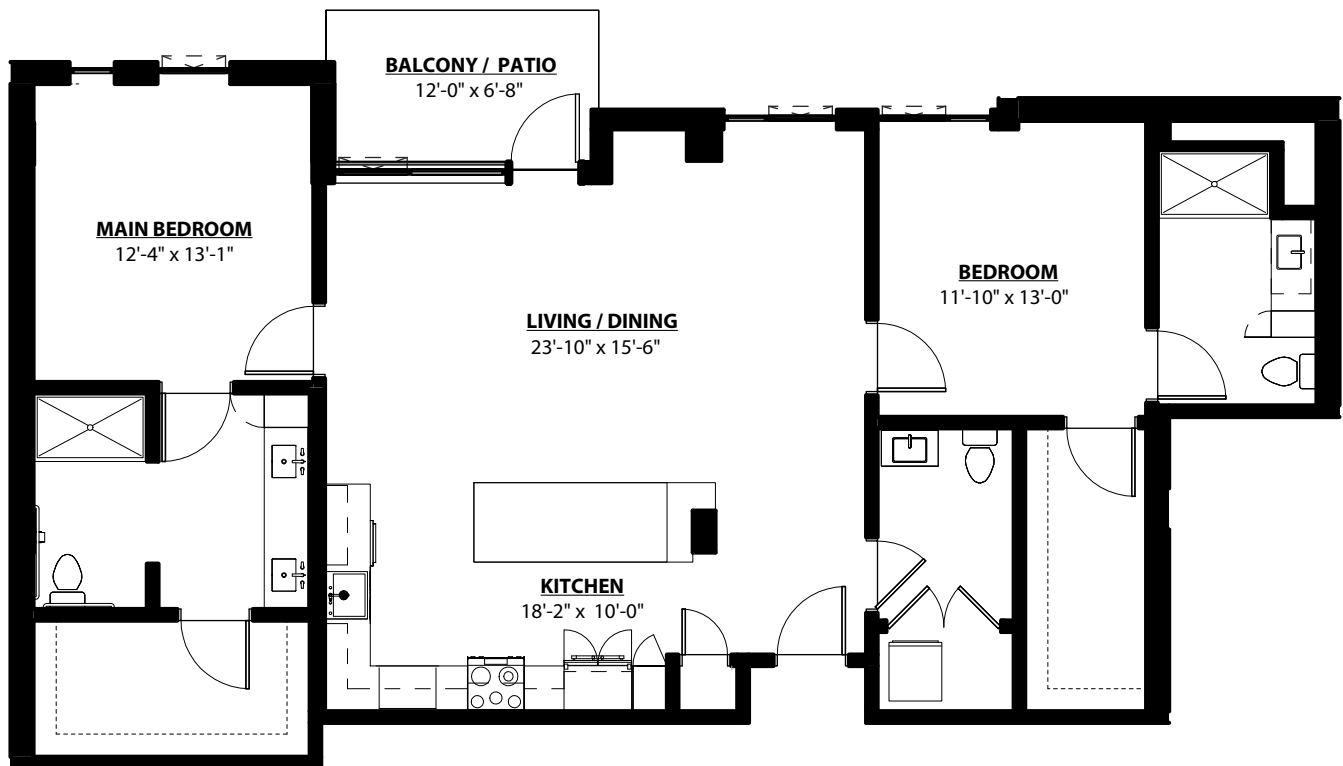


Per Health and Safety Code section 1772.2, Kendal at Ventura has filed an application for a Permit to Accept Deposits and a Certificate of Authority with the California Department of Social Services.

Enso VerdeSM
A KENDAL AFFILIATE

Lupine C

2 BEDROOM • 2.5 BATH • 1,429 SQ. FT.



All unit plans are representative and may not reflect the exact dimensions of all units within the building.

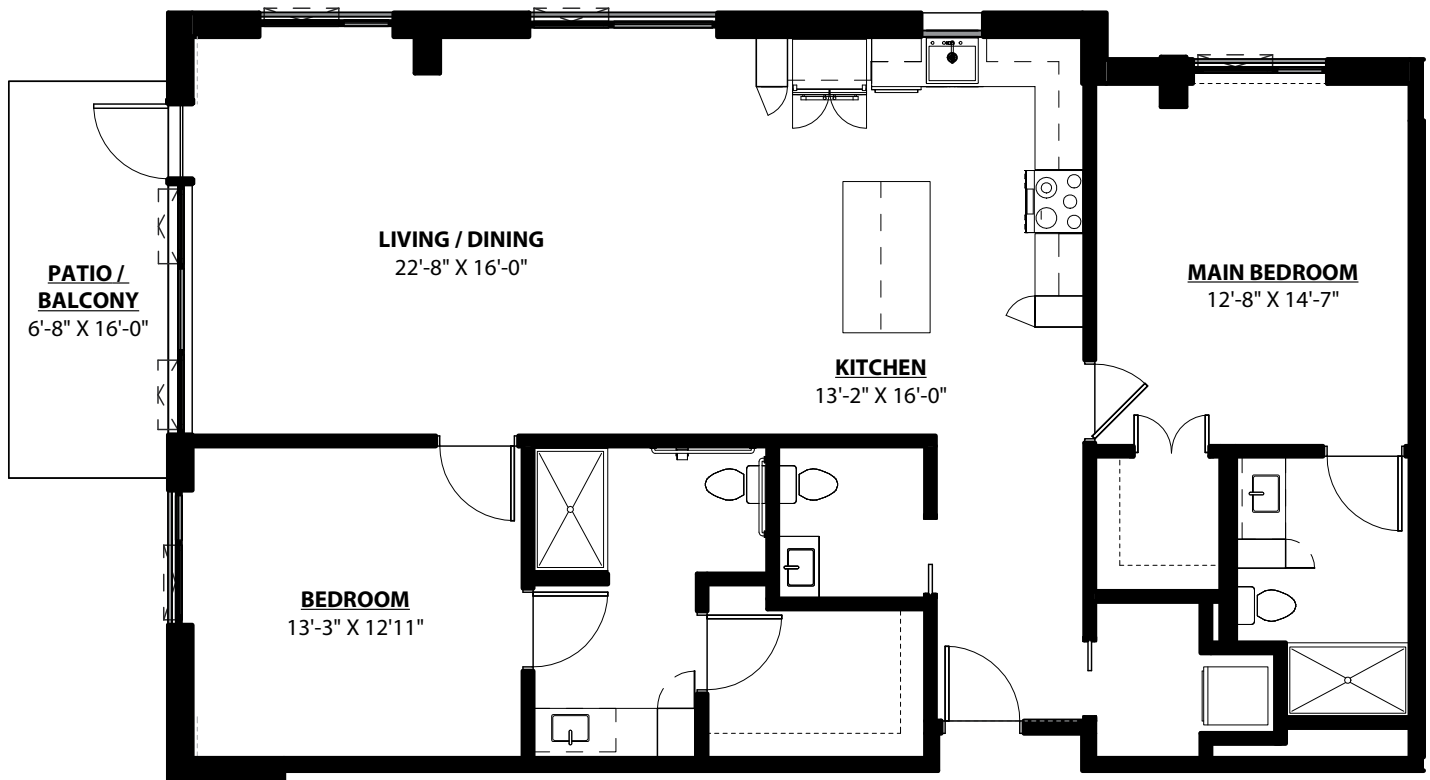


Per Health and Safety Code section 1772.2, Kendal at Ventura has filed an application for a Permit to Accept Deposits and a Certificate of Authority with the California Department of Social Services.

Enso VerdeSM
A KENDAL AFFILIATE

Lupine D

2 BEDROOM • 2.5 BATH • 1,445 SQ. FT.



All unit plans are representative and may not reflect the exact dimensions of all units within the building.

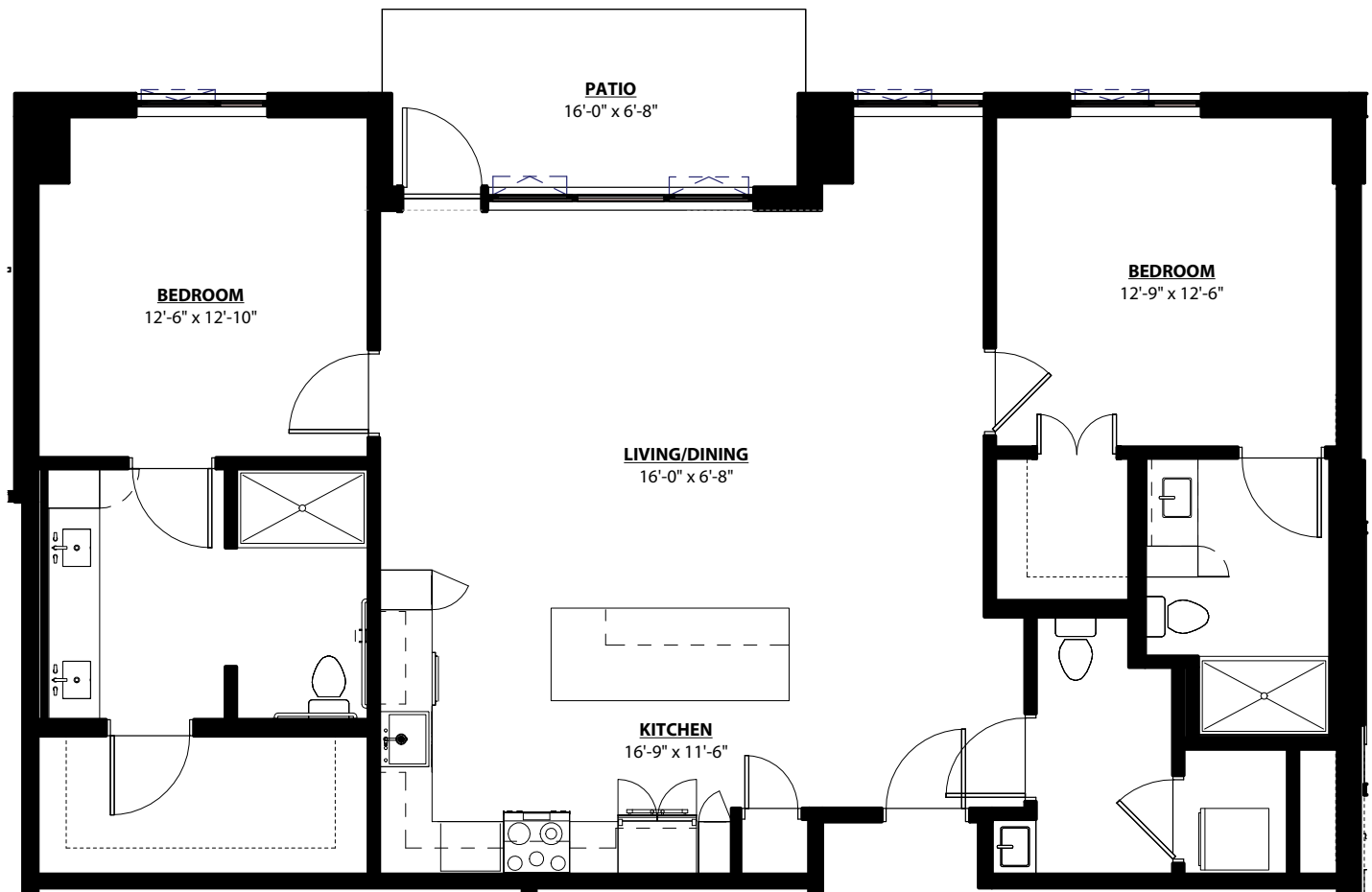


Per Health and Safety Code section 1772.2, Kendal at Ventura has filed an application for a Permit to Accept Deposits and a Certificate of Authority with the California Department of Social Services.

Enso VerdeSM
A KENDAL AFFILIATE

Lupine E

2 BEDROOM • 2.5 BATH • 1,380 SQ. FT.



All unit plans are representative and may not reflect the exact dimensions of all units within the building.

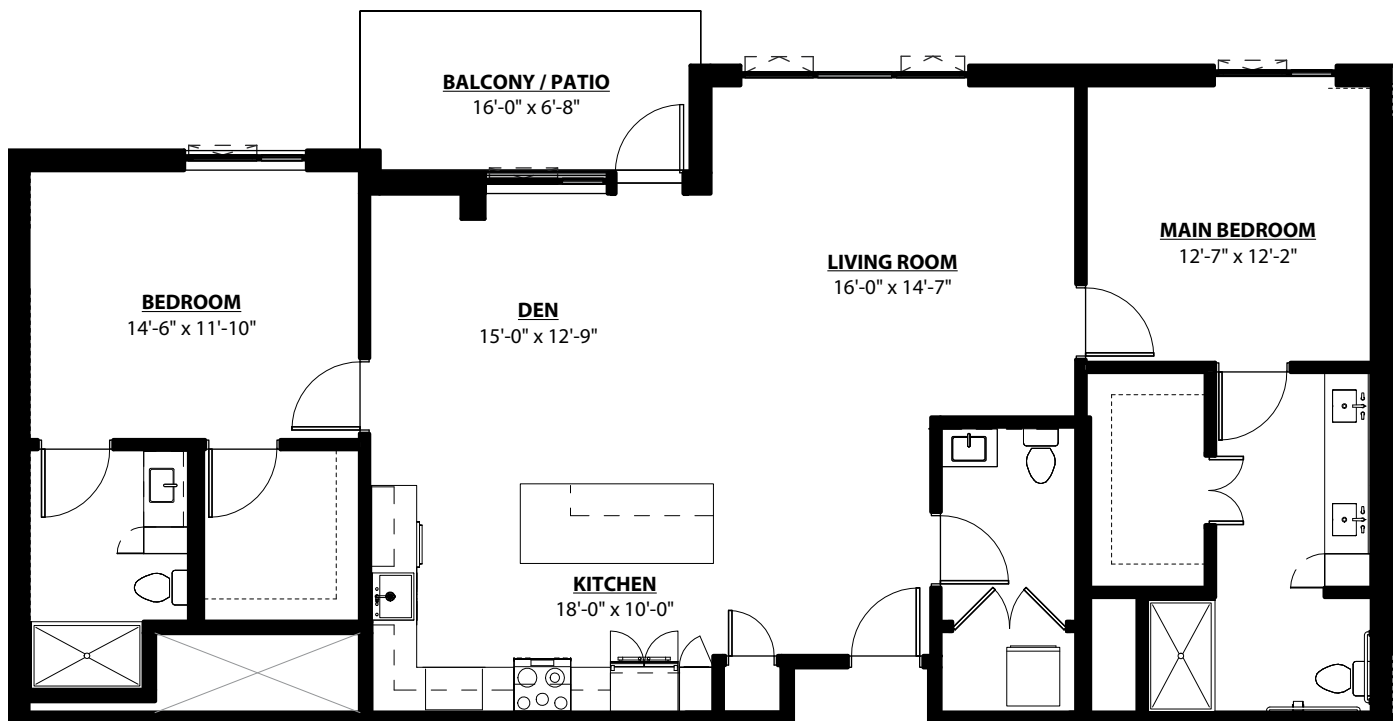


Per Health and Safety Code section 1772.2, Kendal at Ventura has filed an application for a Permit to Accept Deposits and a Certificate of Authority with the California Department of Social Services.

Enso VerdeSM
A KENDAL AFFILIATE

Mariposa

2 BEDROOM • 2.5 BATH • DEN • 1,511 SQ. FT.



All unit plans are representative and may not reflect the exact dimensions of all units within the building.

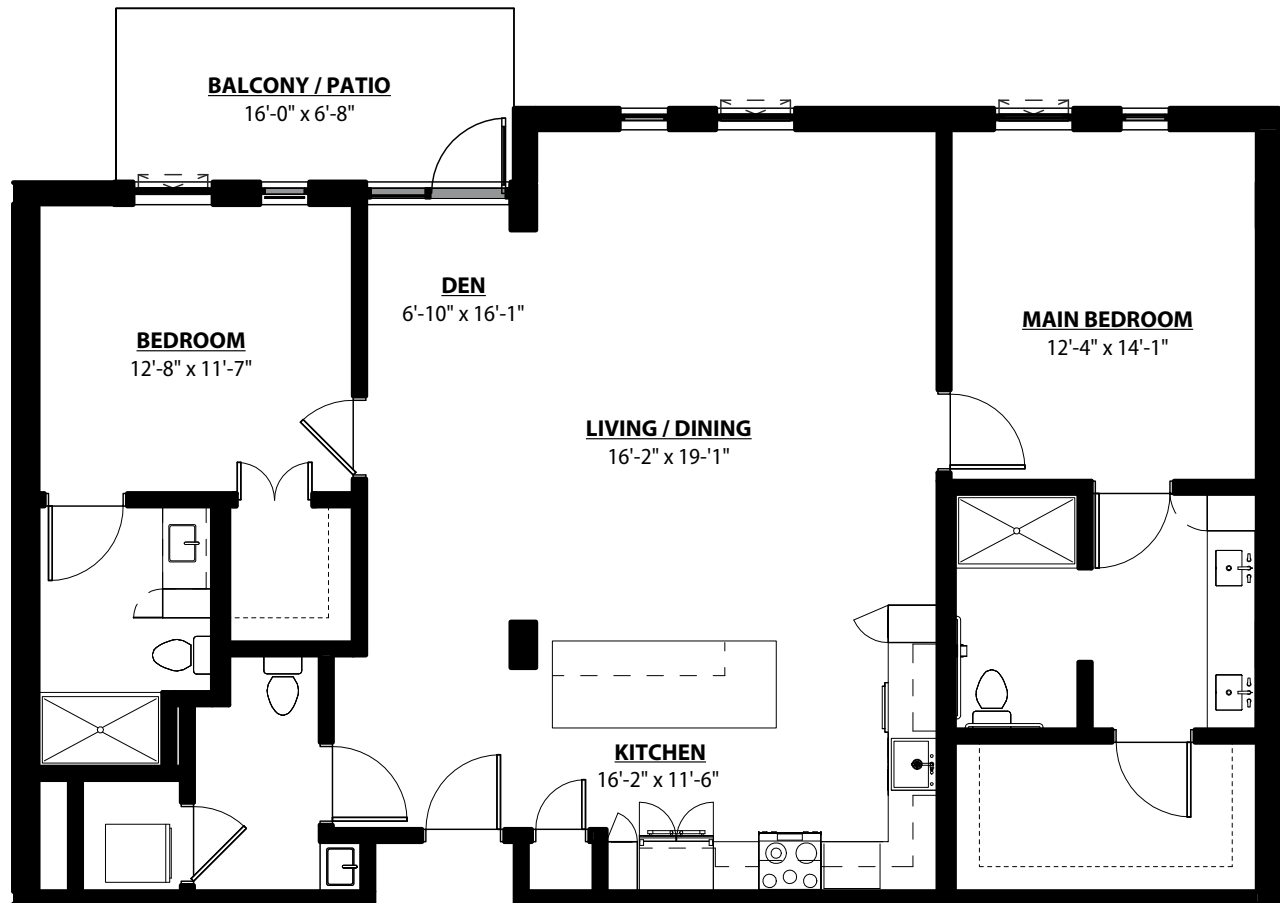


Per Health and Safety Code section 1772.2, Kendal at Ventura has filed an application for a Permit to Accept Deposits and a Certificate of Authority with the California Department of Social Services.

Enso VerdeSM
A KENDAL AFFILIATE

Morning Glory A

2 BEDROOM • 2.5 BATH • DEN • 1,488 SQ. FT.



All unit plans are representative and may not reflect the exact dimensions of all units within the building.

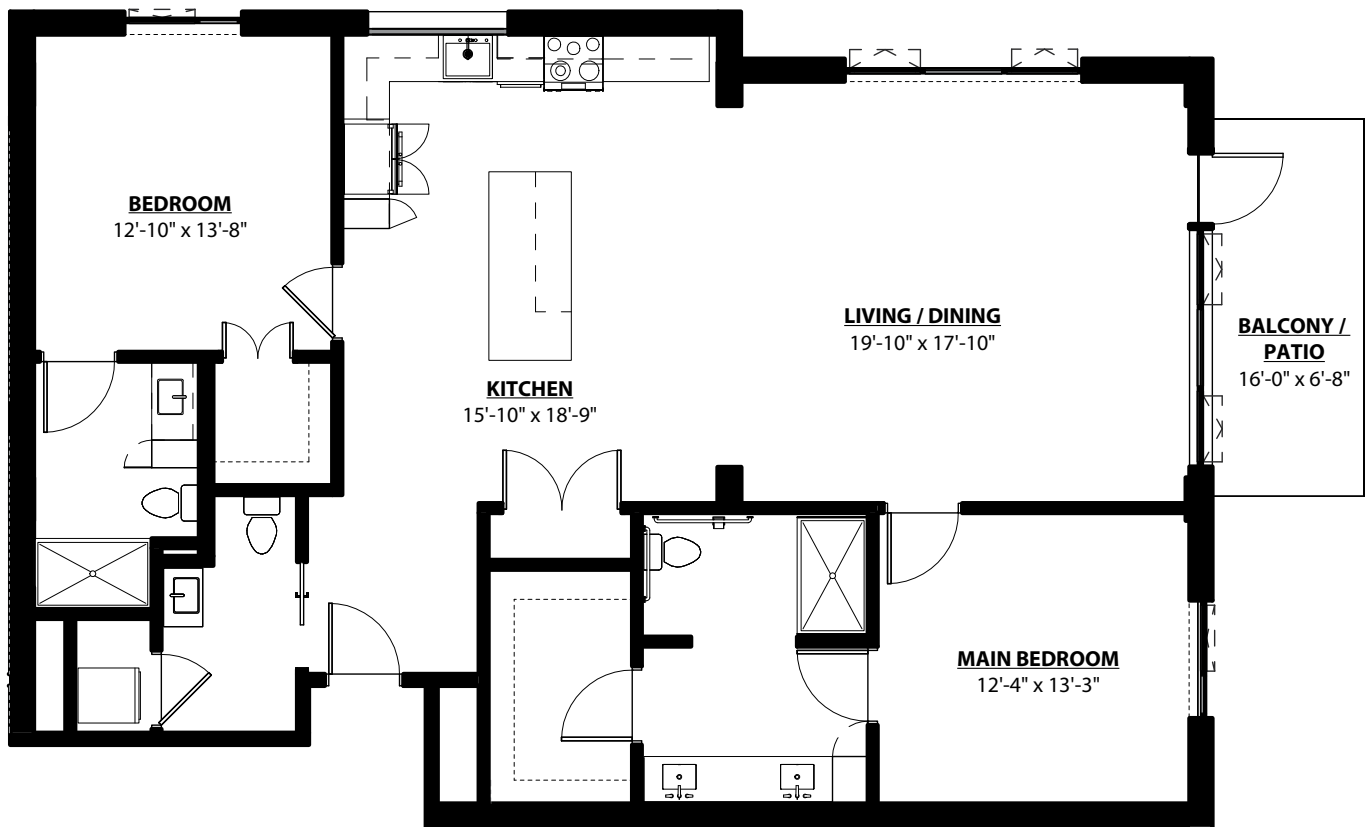


Per Health and Safety Code section 1772.2, Kendal at Ventura has filed an application for a Permit to Accept Deposits and a Certificate of Authority with the California Department of Social Services.

Enso VerdeSM
A KENDAL AFFILIATE

Morning Glory B

2 BEDROOM • 2.5 BATH • 1,569 SQ. FT.



All unit plans are representative and may not reflect the exact dimensions of all units within the building.

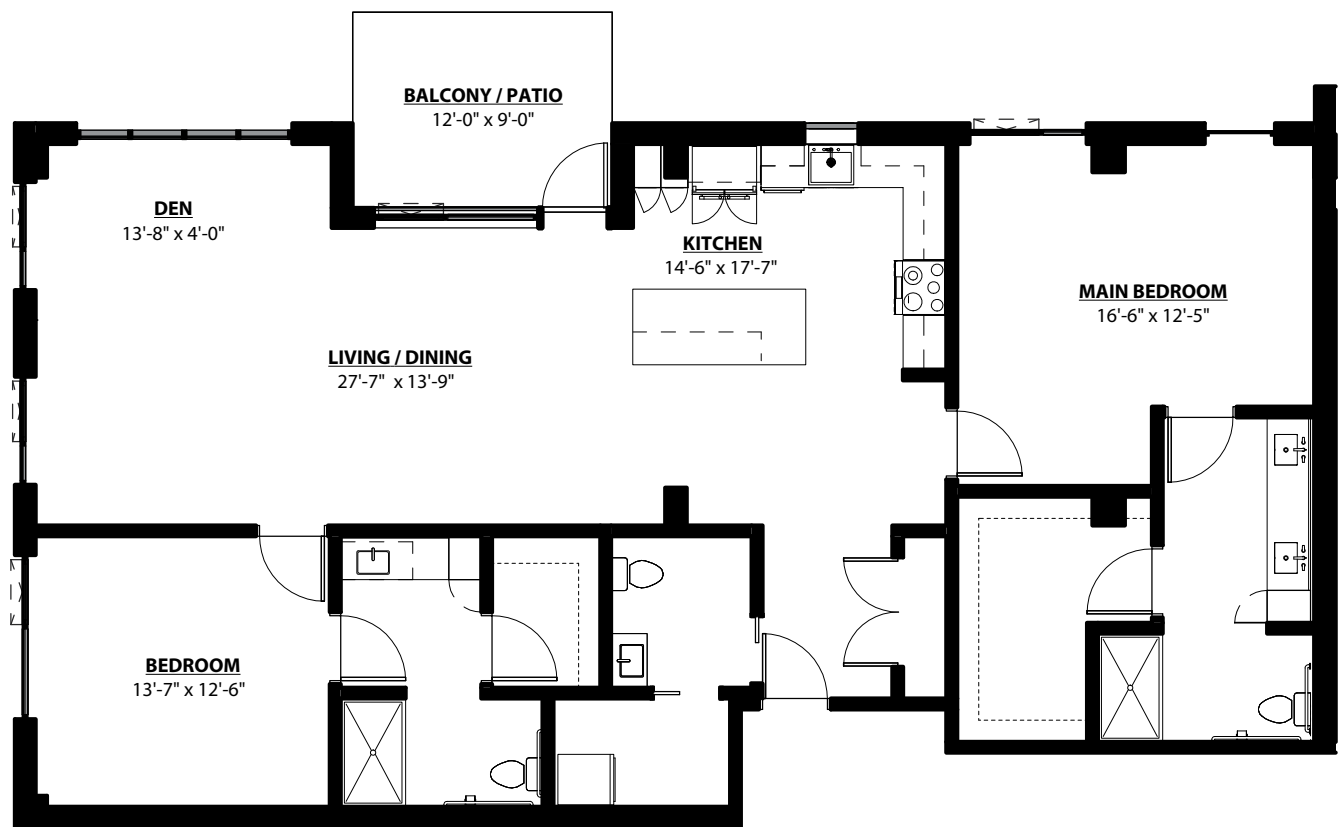


Per Health and Safety Code section 1772.2, Kendal at Ventura has filed an application for a Permit to Accept Deposits and a Certificate of Authority with the California Department of Social Services.

Enso VerdeSM
A KENDAL AFFILIATE

Poppy A

2 BEDROOM • 2.5 BATH • DEN • 1,740 SQ. FT.



All unit plans are representative and may not reflect the exact dimensions of all units within the building.

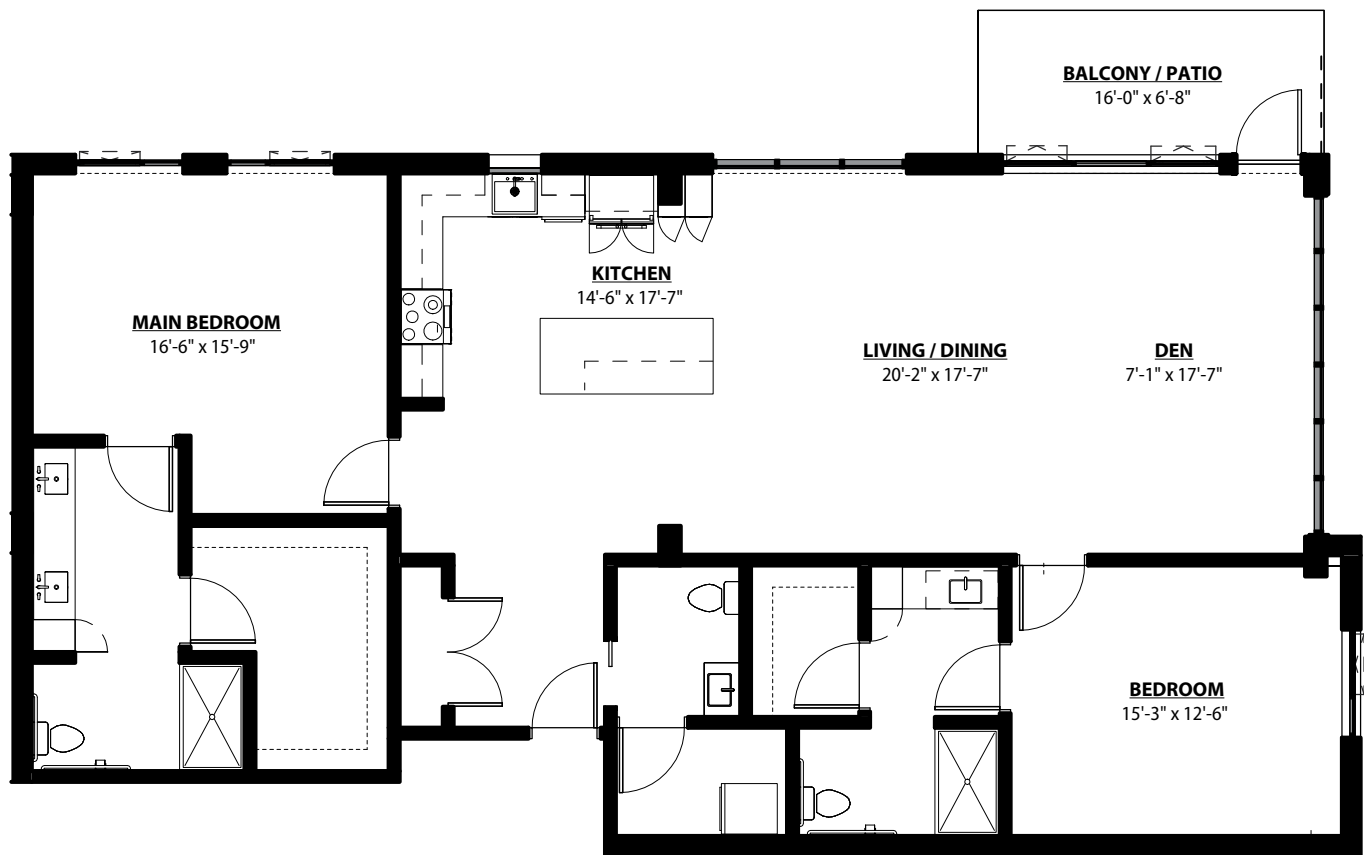


Per Health and Safety Code section 1772.2, Kendal at Ventura has filed an application for a Permit to Accept Deposits and a Certificate of Authority with the California Department of Social Services.

Enso VerdeSM
A KENDAL AFFILIATE

Poppy B

2 BEDROOM • 2.5 BATH • DEN • 1,809 SQ. FT.



All unit plans are representative and may not reflect the exact dimensions of all units within the building.

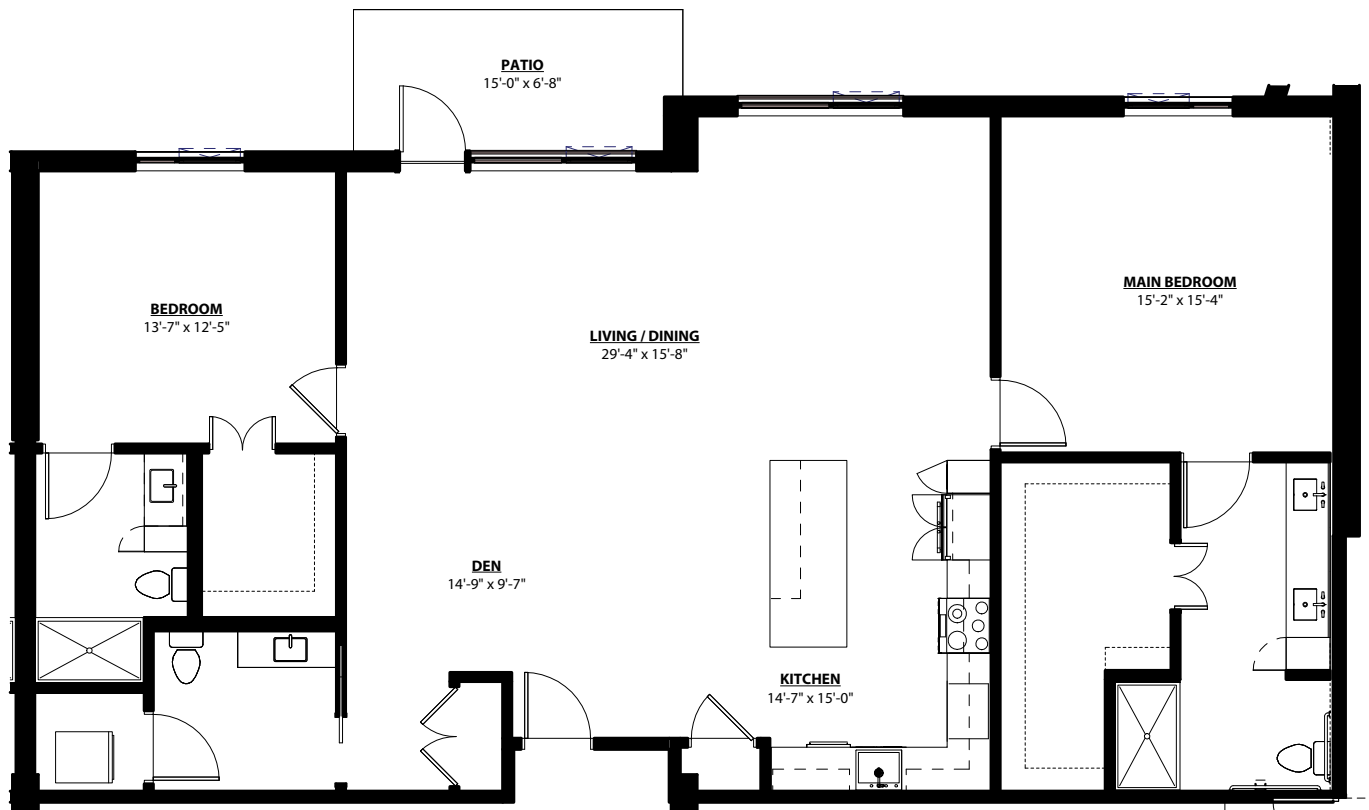


Per Health and Safety Code section 1772.2, Kendal at Ventura has filed an application for a Permit to Accept Deposits and a Certificate of Authority with the California Department of Social Services.

Enso VerdeSM
A KENDAL AFFILIATE

Poppy C

2 BEDROOM • 2.5 BATH • DEN • 1,795 SQ. FT.



All unit plans are representative and may not reflect the exact dimensions of all units within the building.

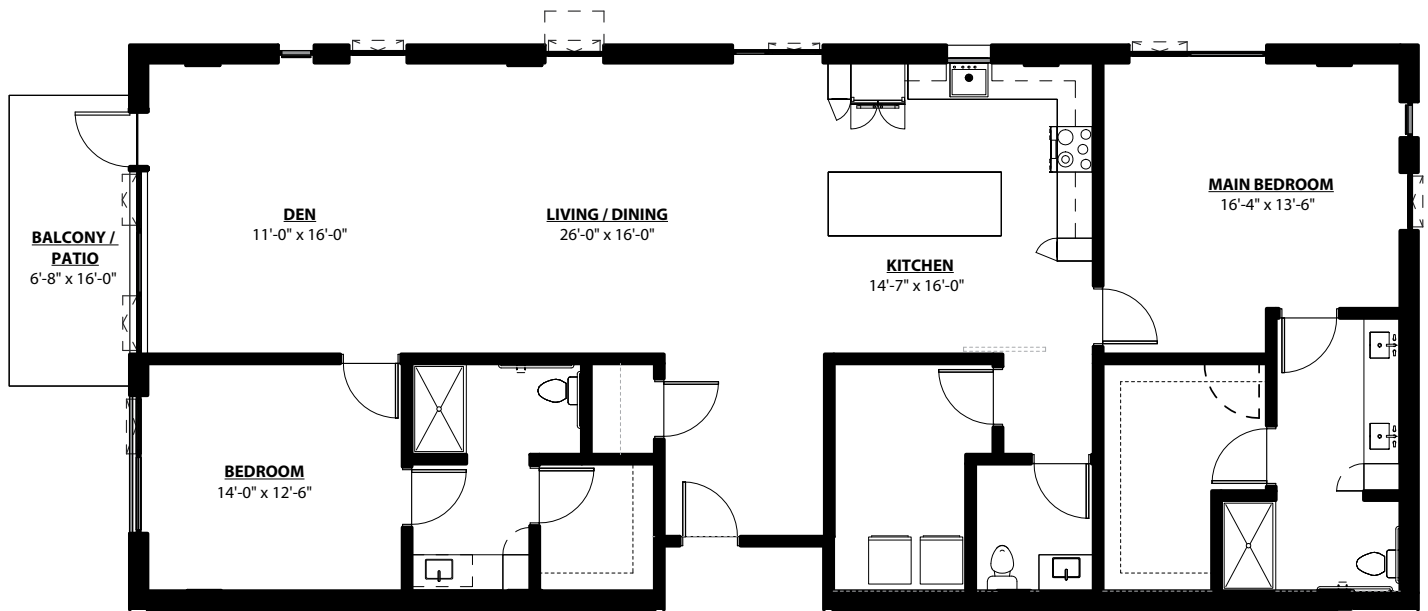


Per Health and Safety Code section 1772.2, Kendal at Ventura has filed an application for a Permit to Accept Deposits and a Certificate of Authority with the California Department of Social Services.

Enso VerdeSM
A KENDAL AFFILIATE

Sage A

2 BEDROOM • 2.5 BATH • DEN • 2,060 SQ. FT.



All unit plans are representative and may not reflect the exact dimensions of all units within the building.

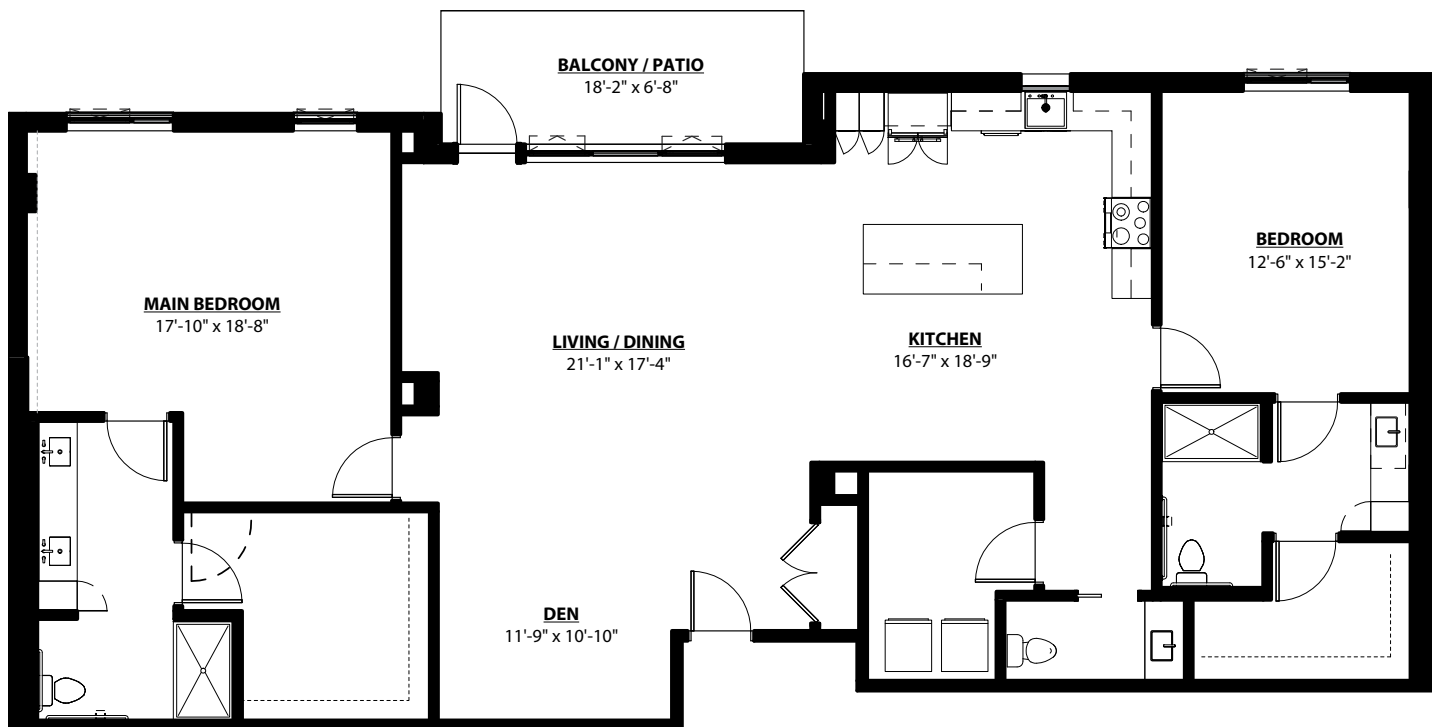


Per Health and Safety Code section 1772.2, Kendal at Ventura has filed an application for a Permit to Accept Deposits and a Certificate of Authority with the California Department of Social Services.

Enso VerdeSM
A KENDAL AFFILIATE

Sage B

2 BEDROOM • 2.5 BATH • DEN • 2,070 SQ. FT.



All unit plans are representative and may not reflect the exact dimensions of all units within the building.

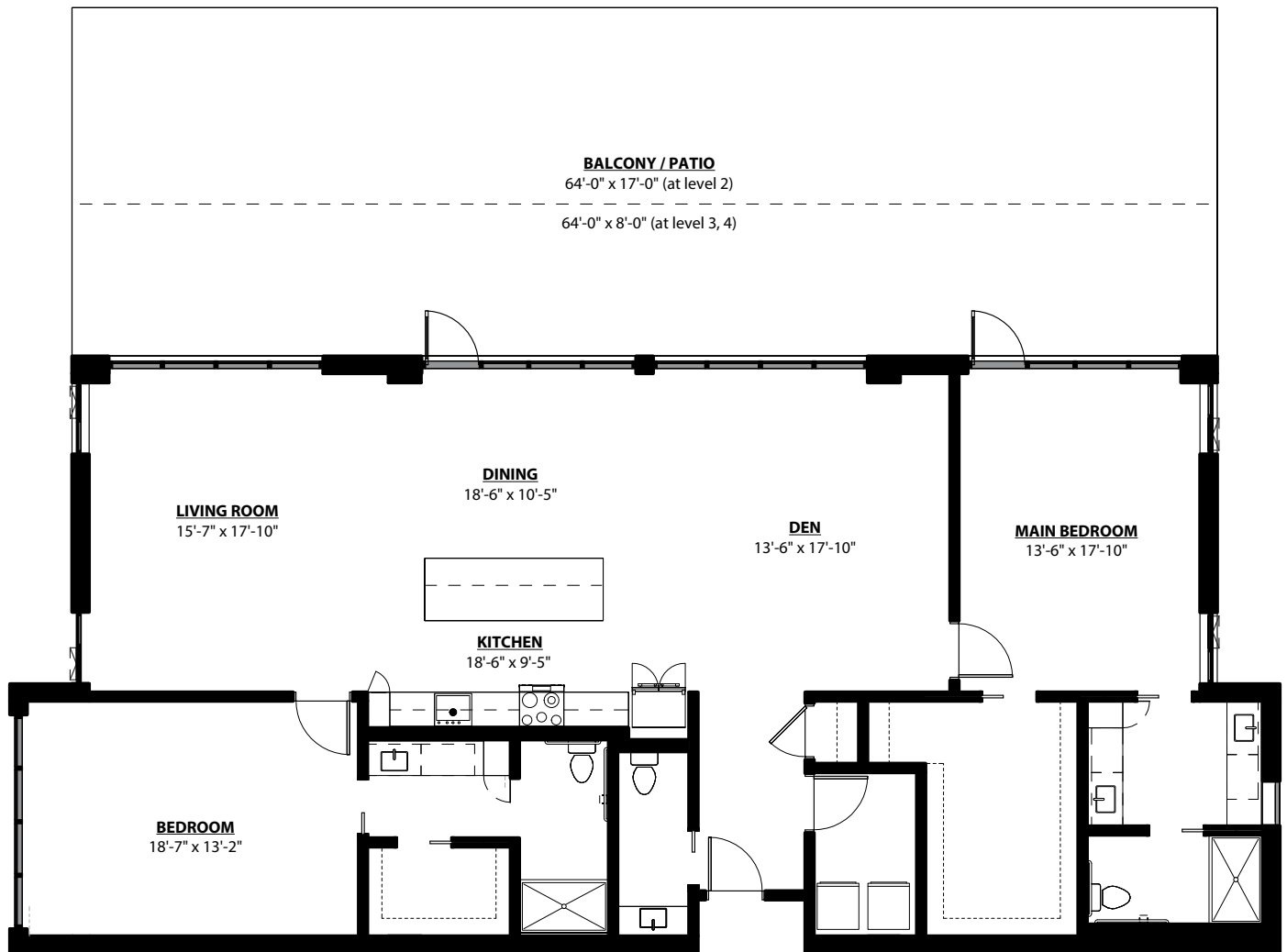


Per Health and Safety Code section 1772.2, Kendal at Ventura has filed an application for a Permit to Accept Deposits and a Certificate of Authority with the California Department of Social Services.

Enso VerdeSM
A KENDAL AFFILIATE

Sun Cup

2 BEDROOM • 2.5 BATH • DEN • 2,133 SQ. FT.



All unit plans are representative and may not reflect the exact dimensions of all units within the building.



Per Health and Safety Code section 1772.2, Kendal at Ventura has filed an application for a Permit to Accept Deposits and a Certificate of Authority with the California Department of Social Services.

Enso VerdeSM
A KENDAL AFFILIATE